

# 616 8800 Hazelbridge Way, Richmond

\$580,000



Concord Gardens South Estates by Concord Pacific. Bright south facing, popular one bedroom plus guest room. Centrally located and steps away from shopping centre, restaurants, public transportation, and future Capstan Skytrain Station. Enjoy 20,000 sq ft of amenities in the Diamond Club, an ultimate playground for entertainment, including a bowling alley, badminton court, indoor swimming pool, games room, private screening, and more.

## KEY INFORMATION

MLS® R2589133

Residential Attached

West Cambie

1 Bedroom

1 Bathroom

618 SF

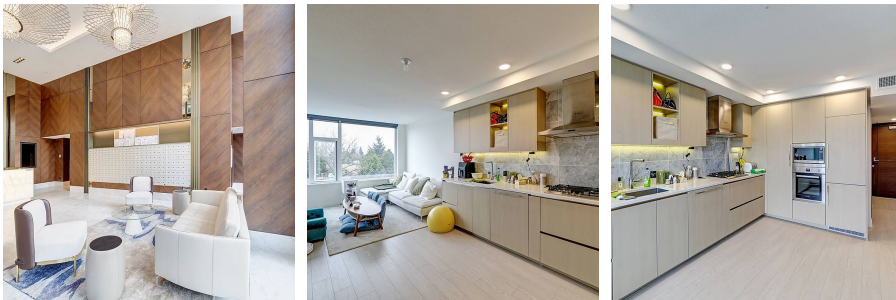
\$327.44 Maintenance Fees

## FEATURES

Year Built: 2020

Views: City

Listed By: RE/MAX Crest Realty



rennie