

32 27735 Roundhouse Drive, Abbotsford

\$689,000



Welcome to this beautiful townhome corner unit at Roundhouse. It is a well designed space with plenty of natural light. This unit has a large open concept kitchen with shaker cabinetry, durable quartz countertops, classic 9' ceiling throughout the main floor & window seats for extra seating in your bright and cozy living room. The top floor has a spacious master bedroom/ensuite and large walk-in closets with a second and third bedroom on the opposite side of the hallway. Unit includes a large tandem garage and spacious sundeck.

KEY INFORMATION

MLS® R2588692

Residential Attached

Aberdeen

3 Bedrooms

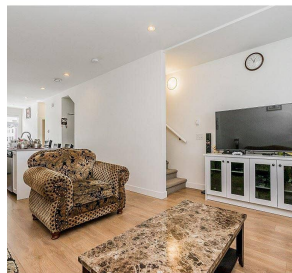
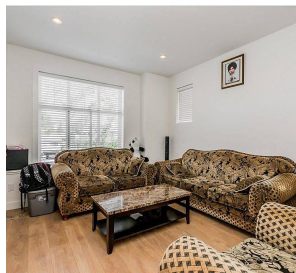
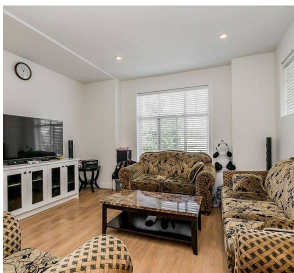
3 Bathrooms

1,276 SF

FEATURES

Year Built: 2018

Listed By: Planet Group Realty Inc.



rennie