

# 16756 17b Avenue, Surrey

\$1,750,000



Highly desirable neighbourhood of Pacific Heights by MORNINGSTAR for a collection of luxury single family homes. Premium West Coast living style with rich exterior and elegant interiors. This bright and charming 3461 spft quality built home offers 4 bedrooms and 4 baths, amazing open concept floor plan with high ceiling living room, big dinning area, open kitchen with top of the line s/s appliances, quartz counters, vaulted master with spa-like ensuite make this home exceptional. Spacious basement is perfect for entertaining with rec area, bdrm & bath with separate entrance. South facing backyard. Double garage. Close to Grandview Corners, Aquatic Centre, Upcoming New park & School, Easy access to Hwy 99. Do not miss it.

## KEY INFORMATION

MLS® R2585112

Residential Detached

Pacific Douglas

4 Bedrooms

4 Bathrooms

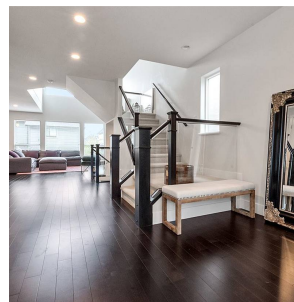
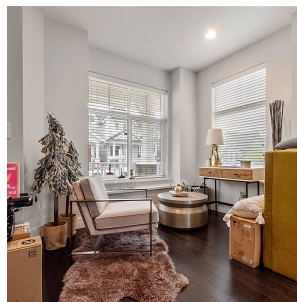
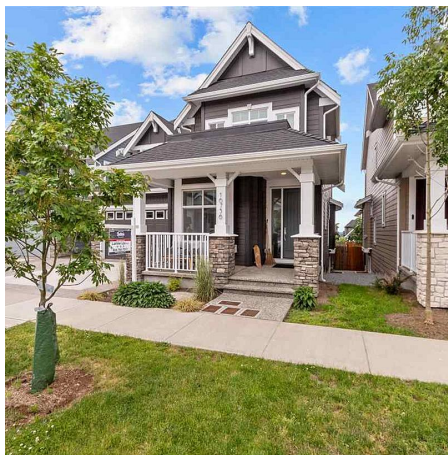
3,461 SF

3,823 SF Lot

## FEATURES

Year Built: 2018

Listed By: Sutton Group-West Coast Realty



rennie