

208 8600 Lansdowne Road, Richmond

\$710,000



Extra large 2 bedroom, 2 bathroom condo. This SW facing corner unit, overlooking the courtyard, has a large and second wrap around balcony. (not included in sqft). The spacious interior includes a separate dining area, large living room with gas fireplace, and a kitchen with adjoining eating area. Large utility/laundry room. Parking #60, storage locker #10. No rentals or pets allowed. Age restrictions 19+. Centrally located steps to Lansdowne Mall, T&T, KPU, transit, Canada Line and restaurants.

KEY INFORMATION

MLS® R2582125

Residential Attached

Brighthouse

2 Bedrooms

2 Bathrooms

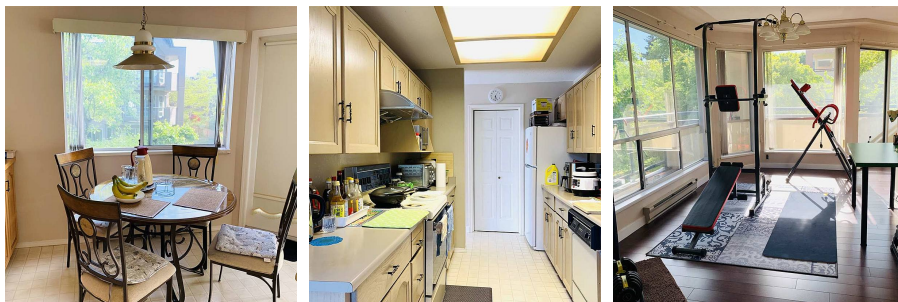
1,346 SF

\$608.00 Maintenance Fees

FEATURES

Year Built: 1988

Listed By: Interlink Realty



rennie