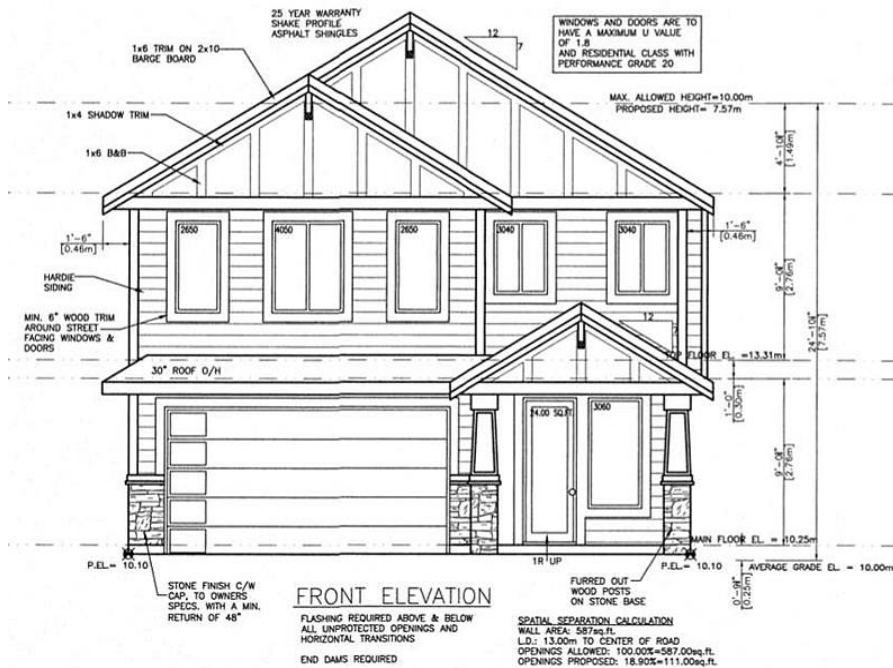


# 9238 Sitka Place, Chilliwack

\$975,000



This two story home with an basement is a perfect size home for anyone. The main floor features a main entrance with a laundry and a rec room. Alongside there is a perfect space to make a two bed 1 bath in-law suite. Making our way up the stairs we find ourselves in the loft area which can be turned into a beautiful open office, to the side there is a spacious master bedroom with a WIC and ensuite bathroom. When we keep walking there are two more bedrooms and a bathroom. Finishing off the top floor we have a large family room all connected around the kitchen and dining providing a nice open layout, and the topper on this floor is the Sundek from the dining room providing spectacular views of the mountains.

## KEY INFORMATION

MLS® R2578526

Residential Detached

Chilliwack

5 Bedrooms

3 Bathrooms

2,840 SF

3,875 SF Lot

## FEATURES

Year Built: 2021

Views: Mountains

Listed By: Royal LePage Global Force Realty