

125 7431 Minoru Boulevard, Richmond

\$438,000



Rare find a bright & clean 2-bedroom south-west facing corner unit in the well maintained Woodridge Estates. Excellent location right in the core of Richmond, walking distance to the Minoru Park, community centre, library, Richmond Centre, skytrain station & all other transits. Close to 2-level of schools. Excellent floor plan, this 936 sf corner unit feats 2 spacious bedrooms & a full bath, one covered parking, lots of natural lights from the wrap around south-west facing balcony, updates with laminated floor, 2" faux wood blinds, white appliances including in suite washer & dryer. Excellent opportunity for first time home buyers or for investments. Quiet & nice neighborhood, well maintained building with shared amenities including outdoor pool, indoor hot tub, sauna & gym. A must see.

KEY INFORMATION

MLS® R2574699

Residential Attached

Brighthouse South

2 Bedrooms

1 Bathroom

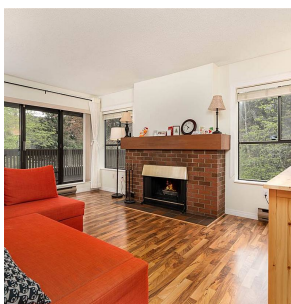
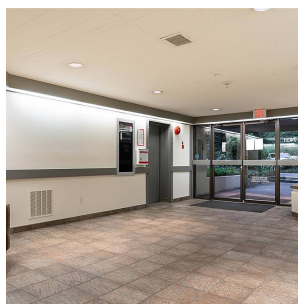
936 SF

\$472.61 Maintenance Fees

FEATURES

Year Built: 1981

Listed By: Multiple Realty Ltd.



rennie