

410 2800 Chesterfield Avenue, North Vancouver

\$699,999



Feels like a cozy house! 1,118 sq.ft, TOP FLOOR, SOUTH FACING with view 2 bed 2 bath home in renowned age 55 + Somerset Green is ideal for those resizing! Walking distance to grocery store, pub, coffee shop & transit! Bright, private, large rooms, 9' ceilings, skylight, gas fireplace (GAS IS INCLUDED IN FEES) large private balcony where you can enjoy your morning coffee & or evening glass of wine! Valued for extensive list of amenities including INDOOR POOL, HOT TUB, GYM, ARTIST/CRAFT STUDIO, WORKSHOP, LIBRARY, & MORE! Enjoy strolls through manicured grounds, private for Somerset Green owners. Parking is secured & underground. Full-size storage locker & more storage on balcony. Pets allowed! Exceptionally well run. Visit 3D floor plan & video <https://my.matterport.com/show/?m=oMzpVgMCTPE>

KEY INFORMATION

MLS® R2574696

Residential Attached

Upper Lonsdale

2 Bedrooms

2 Bathrooms

1,118 SF

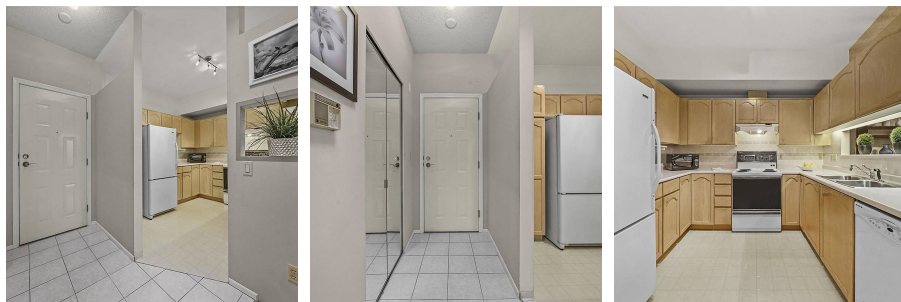
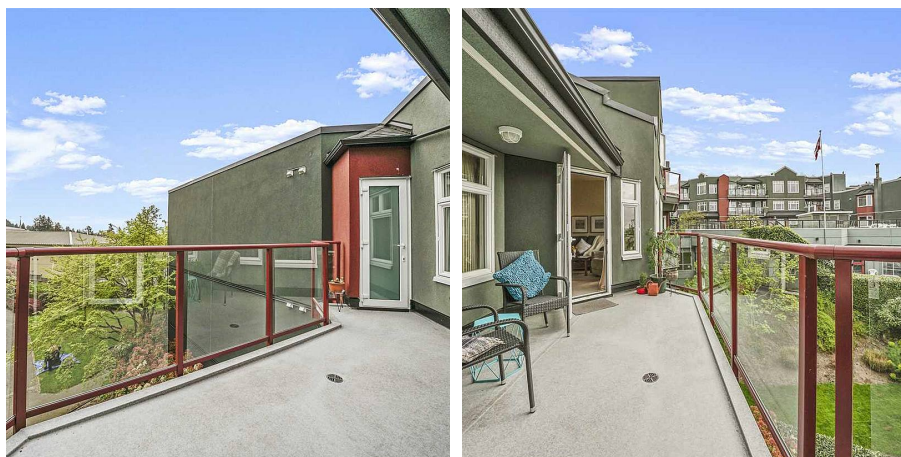
\$529.68 Maintenance Fees

FEATURES

Year Built: 1988

Views: City & Garden

Listed By: Keller Williams Elite Realty



rennie