

5a 2300 Nordic Drive, Whistler

\$299,000



At Nature's Door offers unparalleled luxury shared ownership with homes boasting quintessential Pacific Northwest architecture created by inspired craftsmanship and materials indigenous to the mountains. Home 5 offers all this plus outstanding views and sun exposure. With beautiful custom furnishing and art, you and your family will feel right at home taking in the mountain and sunset views from your large covered deck with Stainless steel BBQ or from your private hot tub. The 4,500-square foot Owners' Lodge and Spa is just steps away in the heart of At Nature's Door with amenities that include your Fairmont front desk and concierge, gym, sauna, steam room, slope side outdoor pool and hot tubs. Call us today to see if ownership in at Nature's Door is right for you.

KEY INFORMATION

MLS® R2574514

Residential Attached

Nordic

4 Bedrooms

4 Bathrooms

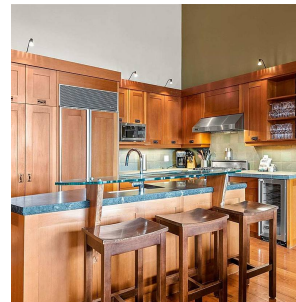
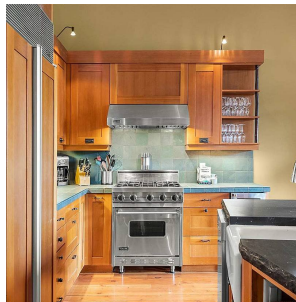
2,587 SF

FEATURES

Year Built: 2003

Views: Mountain and valley views

Listed By: Whistler Real Estate Company Limited



rennie