

1005 9981 Whalley Boulevard, Surrey

\$419,000



Amazing opportunity to own a luxury Southwest unit with spectacular views of Mount Baker and Gulf Islands. Park Place 2 by Concord Pacific features European open kitchen with Corian counter tops & stainless steel appliances. Spacious open floor plan with floor-to-ceiling windows and sizeable balcony to take in the beautiful views and great for BBQs/entertaining. Upgraded washer/dryer. Building is equipped with 24 hours concierge services, gym, yoga room, bowling centre. Located beside King George Skytrain Station, destinations throughout Vancouver area are an easy commute. One parking stall included.

KEY INFORMATION

MLS® R2574092

Residential Attached

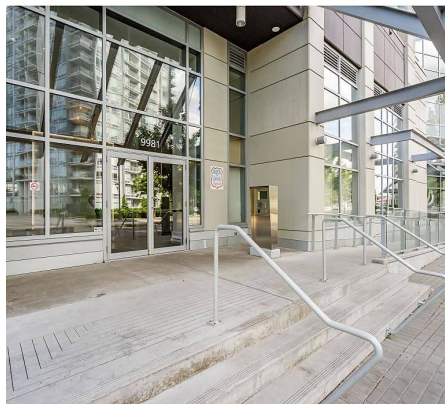
Whalley

1 Bedroom

1 Bathroom

596 SF

\$310.43 Maintenance Fees

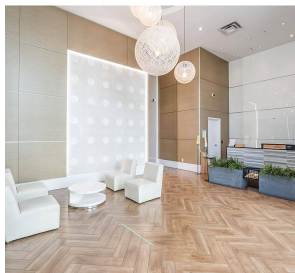


FEATURES

Year Built: 2011

Views: Mountain and City

Listed By: Royal First Realty



rennie