

# 418 611 Regan Avenue, Coquitlam

\$525,000



Regan's Walk built by Marcon, one of BC's most respected developers. Contemporary classic architecture by award-winning Rositch Hemphill Architects and fresh modern interiors by Gannon Ross Designs give Regan's Walk a lasting appeal. Features includes spacious master bedroom with cheater en-suite, laminated flooring, kitchen island with breakfast bar, quartz countertops, double sinks, and contemporary cabinets. Stainless steel appliances. This top floor unit overlooks the courtyard with a scenic and peaceful view of the Burnaby mountain with spacious balcony that you could enjoy in the summer. Located in the heart of an exciting new neighborhood emerging around the Burquitlam SkyTrain Station and the Evergreen Line, Lougheed Mall, Korean Supermarkets, and Close to SFU. Pets and rental ok.

## KEY INFORMATION

MLS® R2573322

Residential Attached

Coquitlam West

1 Bedroom

1 Bathroom

631 SF

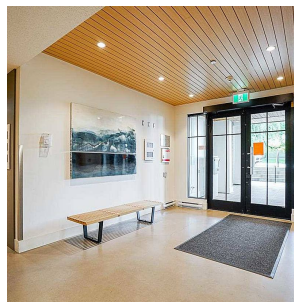
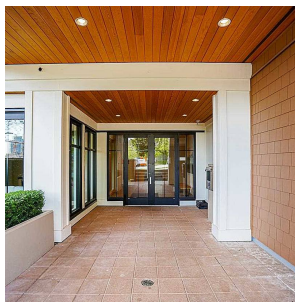
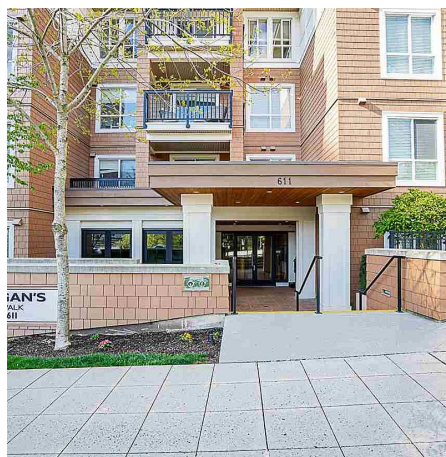
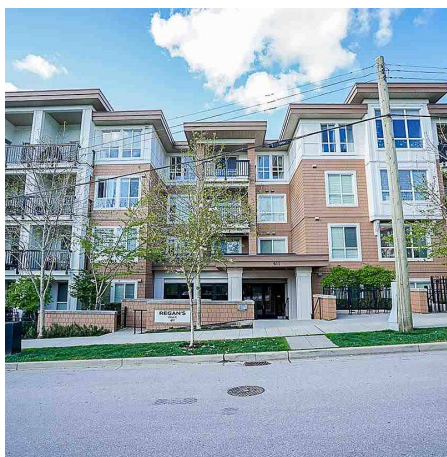
\$261.68 Maintenance Fees

## FEATURES

Year Built: 2015

Views: MTN VIEW THROUGH COURTYARD

Listed By: RE/MAX Crest Realty



rennie