

13665 230a Street, Maple Ridge

\$1,150,000



Desirable Family basement entry Home, 4 years young in "Campton Green"! Large covered Entry to welcome you! Great room, a Lovely open floor plan. 9' Ceilings w/French doors to Covered Patio. Spacious Master suite, 5 piece Ensuite w/ Freestanding Soaker Tub & Walk in Closet. Both Kitchens feature: Elegant White cabinets, Granite & Quartz countertops, Island, undermount sinks, Stainless Steel appls Featuring: crown moulding & deluxe trim package! One bed In-Law-Suite w/ 4 pc Bath & In-suite Laundry! Enjoy Central Air, Hot water on Demand, Cozy gas Fireplace, Enjoy Large Covered Patio, with privacy fence! Double Car Garage! Great Silver Valley locations right across from Community Park with playground & Sports Court. Balance of 10 yr warranty. 2016 Quality Built by Scott Charlton Construction.

KEY INFORMATION

MLS® R2569939

Residential Detached

Silver Valley

4 Bedrooms

3 Bathrooms

2,488 SF

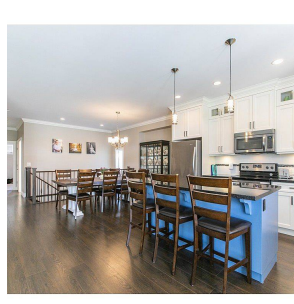
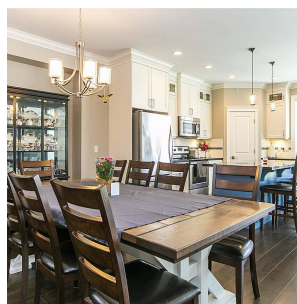
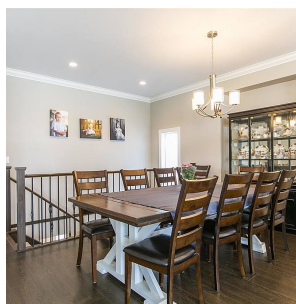
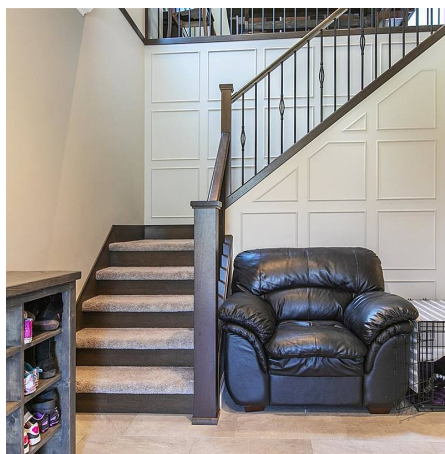
3,842 SF Lot

FEATURES

Year Built: 2016

Views: PARK

Listed By: RE/MAX LIFESTYLES REALTY



rennie