

10 5945 176a Street, Surrey

\$769,900



CRIMSON - Beautiful 1 year old craftsman style 4 bedroom townhome end unit with a private side yard. All fenced with street parking right in front. Spacious double garage. No stairs to lower floor bedroom. Beautiful open concept with lots of light. Wide open space in great room. Kitchen has large eat up bar island, pantry, lots of drawers and cupboards, gas stove and microwave oven under the counter. Master bedroom has walkin closet and full ensuite. Large West exposed back deck off kitchen has gas hookup for barbecue. Modern clean neutral color design with black accent features. Bus within 1 block. Best location in the complex. Invest here.

KEY INFORMATION

MLS® R2568464

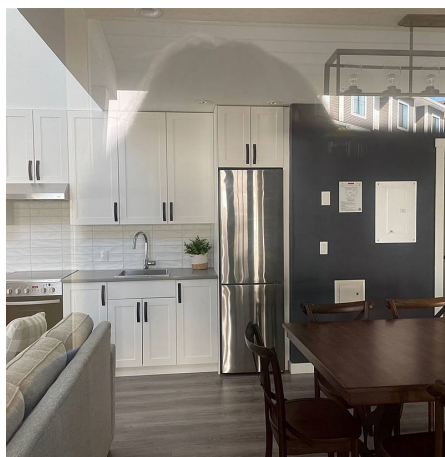
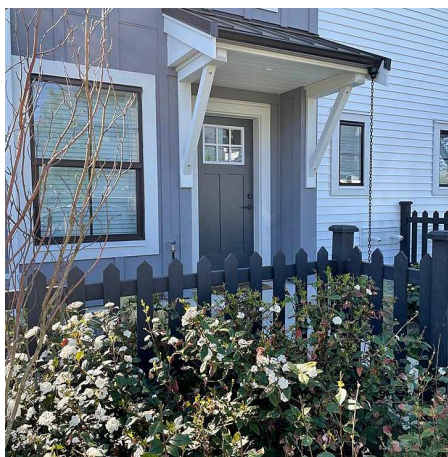
Residential Attached

Cloverdale

4 Bedrooms

3 Bathrooms

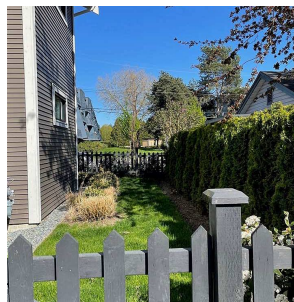
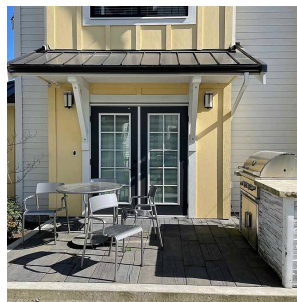
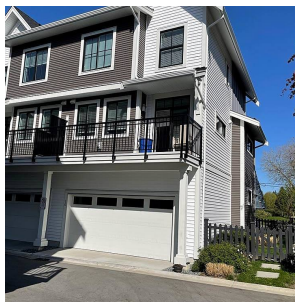
1,432 SF



FEATURES

Year Built: 2019

Listed By: Homelife Benchmark Realty Corp.
(Branch)



rennie