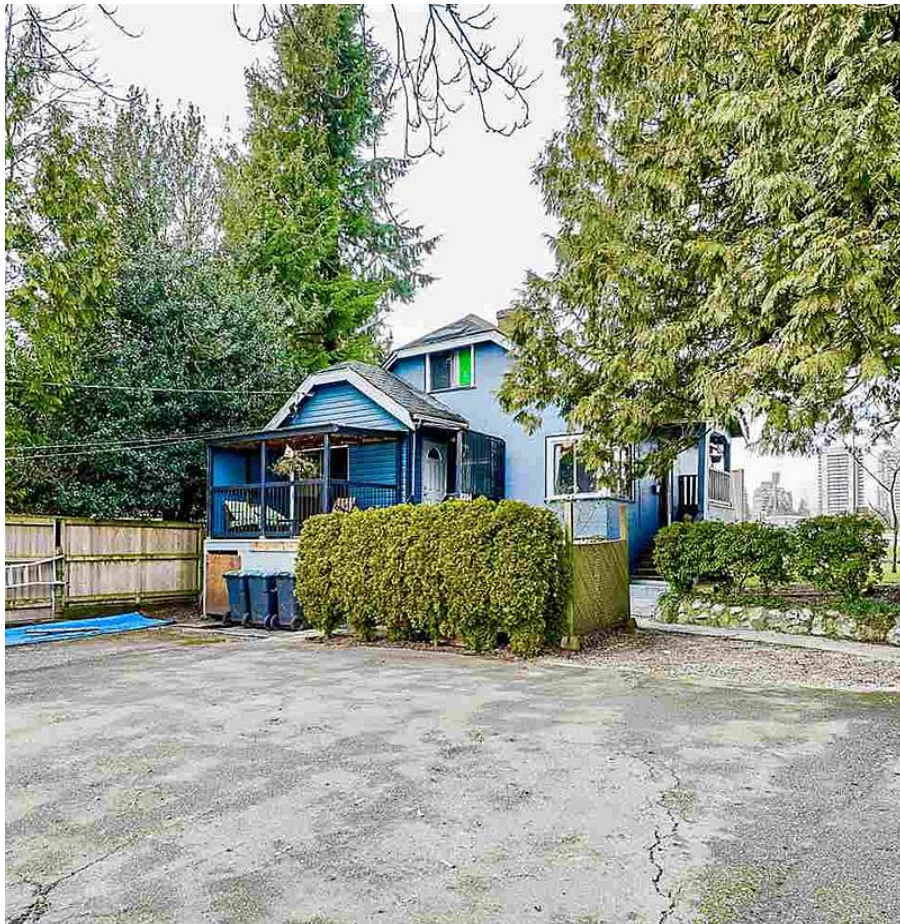


932 Twentieth Street, New Westminster

\$1,089,999



INVESTOR/BUILDER ALERT! Prime CORNER LOT on the New Westminster/Burnaby border. Close to all levels of schools (Connaught Heights Elementary, Fraser Middle School and New Westminster Secondary) new Twin Rink complex being built, Metrotown and 22nd Street Skytrain Station. Easy access to the Quay, Royal City Centre, Queensborough, Big Bend Crossing/ Marine Way Market and more! 3 bedroom, 1 bathroom upstairs and 1 bedroom suite downstairs and zoned for Carriage Home. BUY and HOLD or REPAIR then RENT/HOLD, or BUILD NEW.

KEY INFORMATION

MLS® R2567896

Residential Detached

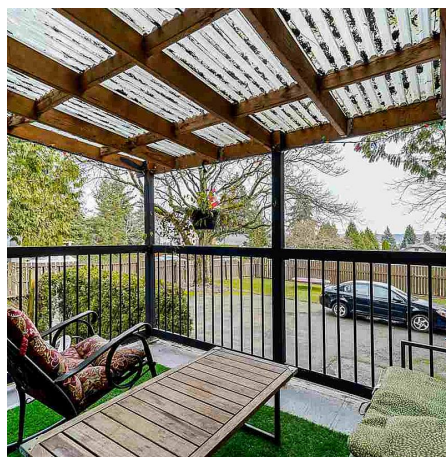
Connaught Heights

3 Bedrooms

2 Bathrooms

1,584 SF

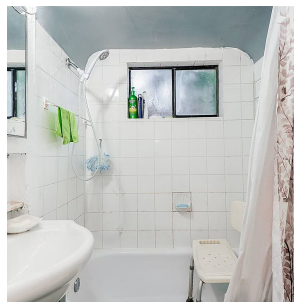
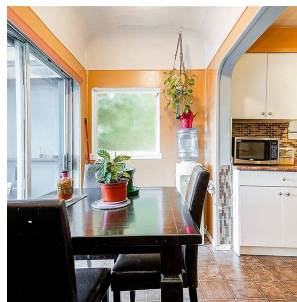
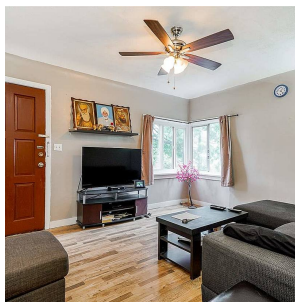
5,994 SF Lot



FEATURES

Year Built: 1940

Listed By: Stonehaus Realty Corp.



rennie