

12858 60 Avenue, Surrey

\$1,240,000



YOUR SEARCH ENDS HERE!! Beautiful 3 level home in highly desirable Panorama Ridge. Main floor features Living Room, Dining room, Family room, Kitchen with Granite Countertops and 2 pc Washroom. Upstairs has 3 Bedrooms and 2 Washrooms. Very Spacious 2 Bedroom Basement Suite with Separate Entry and Parking as a Great Mortgage Helper. Good for first time home buyers. Close to Parks, Playground, Schools and Transit. Easy commute to Langley, Cloverdale, Richmond, Vancouver and USA. This will not last long, Call to book your private showing.

KEY INFORMATION

MLS® R2567094

Residential Detached

Panorama Ridge

5 Bedrooms

4 Bathrooms

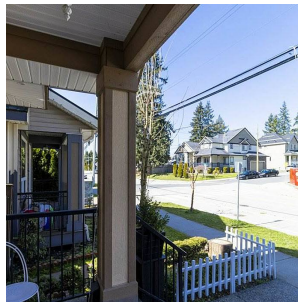
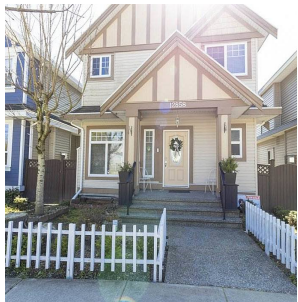
2,611 SF

2,743 SF Lot

FEATURES

Year Built: 2011

Listed By: Investa Prime Realty Inc.



rennie