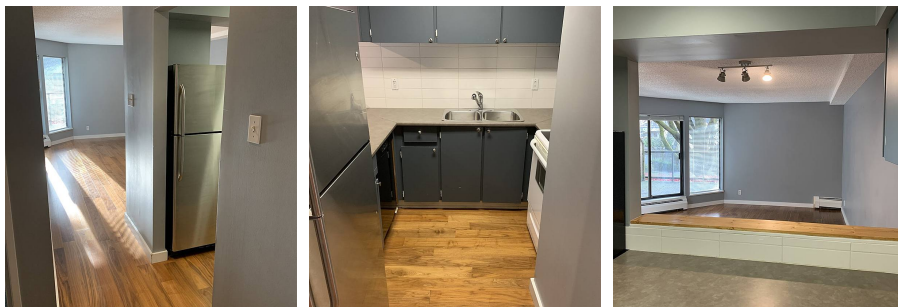


# 117 8451 Westminster Highway, Richmond

\$395,000



NO RENTAL RESTRICTIONS and pets allowed. Great 1 bed & den beautifully renovated with huge 250+ sq.ft. private patio overlooking the courtyard. Great opportunity for 1st time Buyers and Investors. Spacious layout with updated kitchen countertops, cabinets & appliances. Walnut engineered hardwood floors throughout, bathroom with newer sink, faucet, countertops and light fixtures. Insuite laundry and comes with storage that can double as an office. Maintenance fee includes heat and hot water. Short stroll to endless array of restaurants, shops, Landsdowne Mall, London Drugs, Walmart, restaurants, Kwantlen Polytechnic University, Skytrain and bus. Measurements by True Space Designs. Neighbourhood information <https://app.hoodq.com/package/e2c3ed8e-8431-40a3-8e73-0863a6a62d60/highlights>

## KEY INFORMATION

MLS® R2567379

Residential Attached

Brighthouse

1 Bedroom

1 Bathroom

661 SF

\$324.48 Maintenance Fees

## FEATURES

Year Built: 1983

Listed By: Macdonald Realty

rennie