

# 415 46289 Yale Road, Chilliwack

\$293,000



Attn investors & 1st time buyers! 800+ sqft, 2 bed 2 bath top floor unit with mountain views has SS appliance package in kitchen with elegant deep-tone shaker style cabinetry & lots of counter space. Bright & airy open concept living/dining area from kitchen with large windows + lots of natural light. Spacious master with WIC + functional 4 piece ensuite bath. 2nd large bedroom, along with 4 piece main bathroom with tub/shower combo. Generous balcony off living room, perfect for enjoying nice summer evenings. In-suite laundry, 2 parking, 1 storage locker with unit. Unmatched central location, walking distance to all levels school, transit, shopping, recreation, and more. Just 2 city blocks from highly anticipated revitalization of DT Chilliwack multi-phase development. Call now for viewing

## KEY INFORMATION

MLS® R2558681

Residential Attached

Chilliwack

2 Bedrooms

2 Bathrooms

823 SF

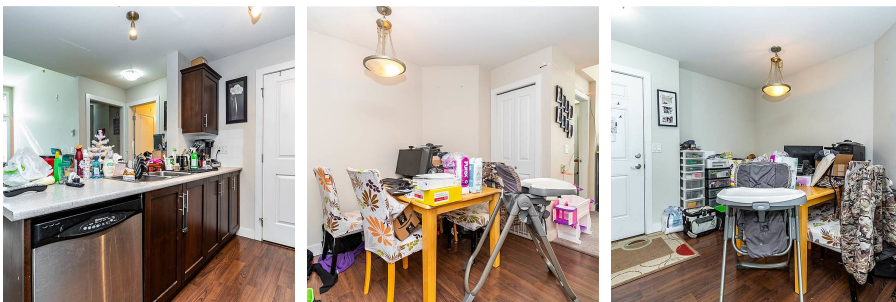
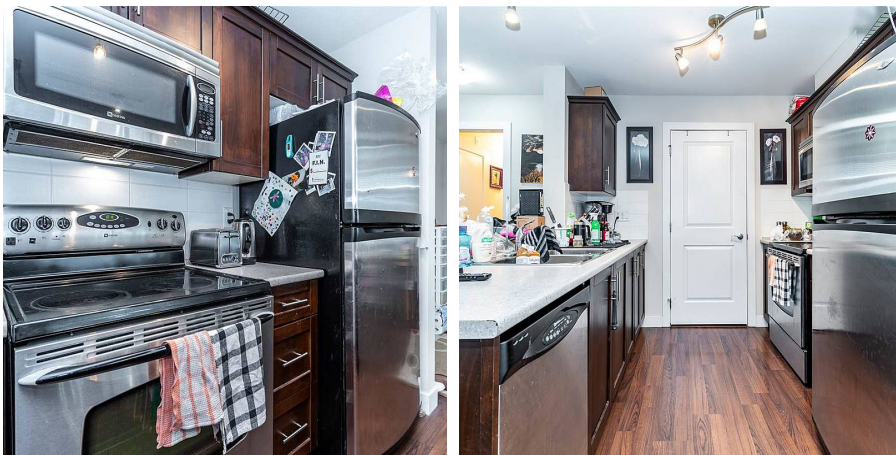
\$298.12 Maintenance Fees

## FEATURES

Year Built: 2008

Views: mountain view

Listed By: HomeLife Advantage Realty Ltd



rennie