

5889 135 Street, Surrey

\$1,988,888



Welcome Home! This custom built home on a quiet street in Panorama Ridge sits on a 7200sqft lot. Owner occupied and meticulously cared for property offers nearly 5000sqft of living space. Well thought out floor plan features spacious foyer with high ceilings, 2 sitting areas, dining room, kitchen & spice kitchen, plus a master bedroom with an ensuite & Walk-in closet all on the MAIN floor. Upstairs you will find 4 bedrooms/3 bathrooms including the luxury master suite with all the amenities. The lower level offers a large media room with wet-bar and a full bathroom. Nearly 100k spent on recent reno's including a Brand New 2 bedroom suite with laundry, 17x14 detached shed/studio with power, plus all exterior concrete redone. Private showings by appointment. Call today

KEY INFORMATION

MLS® R2562352

Residential Detached

Panorama Ridge

7 Bedrooms

7 Bathrooms

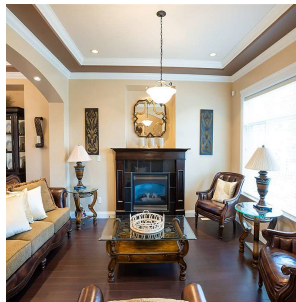
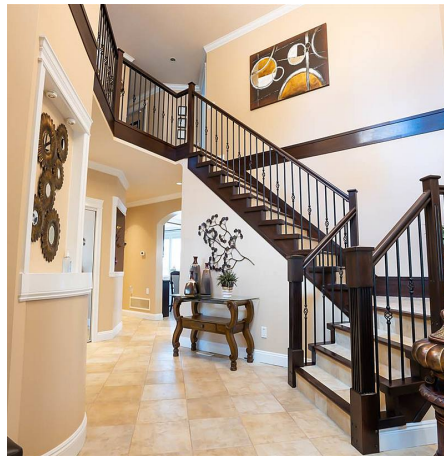
4,964 SF

7,200 SF Lot

FEATURES

Year Built: 2007

Listed By: Sutton Group-West Coast Realty (Surrey/24)



rennie