

173 15088 Edmund Drive, Surrey

\$809,900



OPEN BY ADVANCE APPOINTMENT ONLY. GREAT LOCATION. This 1,570 square foot, 3 bedroom + den and 2.5 bathroom corner home is steps from Panorama Village at Townsend by Polygon. This home boasts 9-foot ceilings, open concept living, a large kitchen and a spacious deck off the kitchen. The den is located off the garage, perfect for a quiet office. This home features a two car, side-by-side garage and faces Panorama Drive, which offers a convenient parking option for guests. Enjoy the convenience of the residents-only clubhouse, Townsend Club, featuring 5,900 sqft of amenities, including a great-room lounge area, teen lounge, kids play area and an outdoor dog wash.

KEY INFORMATION

MLS® R2562935

Residential Attached

Sullivan Station

3 Bedrooms

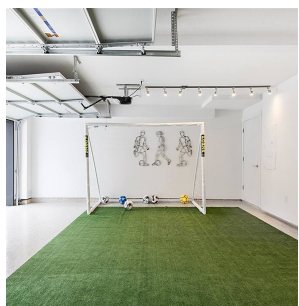
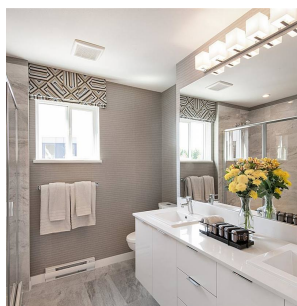
3 Bathrooms

1,570 SF

FEATURES

Year Built: 2022

Listed By: Polygon Realty Limited



rennie