

2303 244 Sherbrooke Street, New Westminster

\$499,999



Hugely popular New Westminster Whistler style condo with Open-Concept Floorplan stylishly updated 2bedroom+2baths PLUS spacious office/den condo perfect for work from home situation.Master bed fits a king,walk in closet,with sliding glass doors to covered deck.Updated modern floors,new carpets,quartz kitchen countertops,premium stainless appliance beautifully integrated into kitchen cabinetry,beautiful lighting,updated washer/dryer.Spacious patio deck extend your living space perfect for your outdoor bbq. There's nothing more to do but move in.Secure complex with FOB building entry,pet/ rentals allowed.Located in hip Brewery District, stroll to shopping,walk to skytrain.Live in or for investment-This is a 10! TEXT/TOUCHBASE Listing Realtor.

KEY INFORMATION

MLS® R2561846

Residential Attached

Sapperton

2 Bedrooms

2 Bathrooms

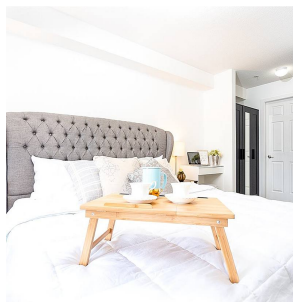
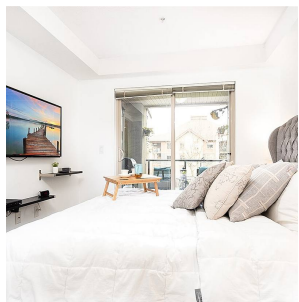
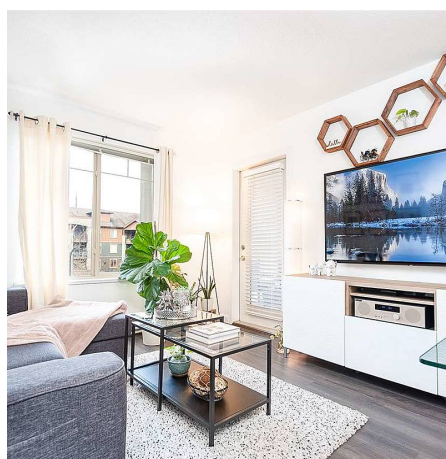
820 SF

\$355.39 Maintenance Fees

FEATURES

Year Built: 2008

Listed By: RA Realty Alliance Inc.



rennie