

5571 Ross Road, Abbotsford

\$6,750,000



SERIOUS FARMERS ALERT! Rare 74.52 ACRES in BRADNER/ MT. LEHMAN area. Exceptional acreage with rolling farmland and half still in original trees, Mt. Baker view and custom built 2 storey with bsmt of approx. 5000sqft. Gated 5 bdrm colonial style home finished with 4 baths, 3 gas f/p, gorgeous millwork, circular staircase, granite tile floor designed and installed by the best artisan, triple garage, central air. Finished outdoor space with paving Older hip roof barn still usable for livestock and many great sites to build another estate home if you need one.

KEY INFORMATION

MLS® R2560171

Residential Detached

Bradner

5 Bedrooms

3 Bathrooms

4,014 SF

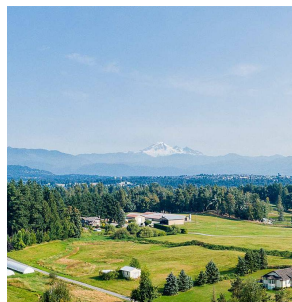
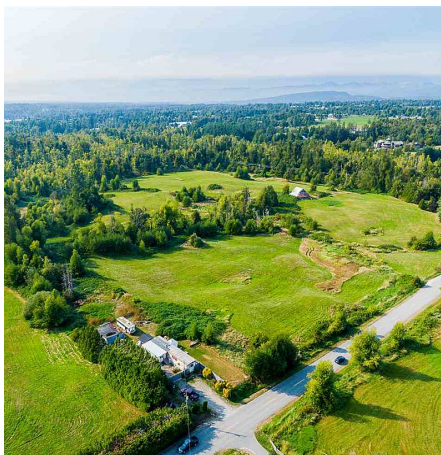
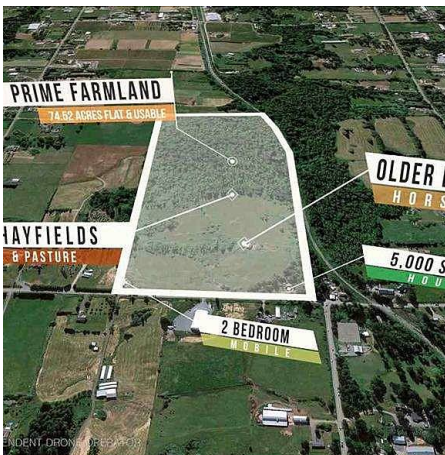
3,246,091 SF Lot

FEATURES

Year Built: 1984

Views: MT. BAKER

Listed By: Top Service Realty



rennie