

106 1550 Chesterfield Avenue, North Vancouver

\$549,000



Quiet, ground floor fully renovated 2 Bdrm in Central Lonsdale's 'Chester's'. This corner suite offers just under 800 sq/ft with an open bright layout & large windows to a nice treelined outlook. The kitchen features new cabinets, quartz counters, & new appliances. The dining/living rms are a great size for entertaining, w/ ample space. Completing the home is the generous sized bedrooms, 4-pce updated spa like bath, & an intimate patio w/ room for a bistro table & chairs, + BBQ. Includes 1 secured parking space and a storage locker. One pet (cat) and long-term rentals allowed (6 at a time). Walking distance to everything in Central Lonsdale with a walk score of 94. Well maintained building!

KEY INFORMATION

MLS® R2560011

Residential Attached

Central Lonsdale

2 Bedrooms

1 Bathroom

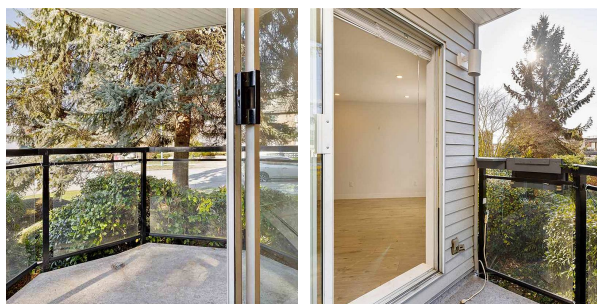
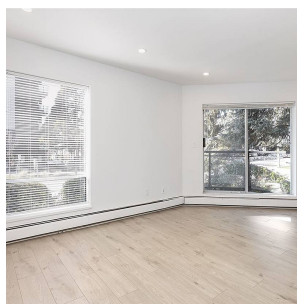
795 SF

\$482.22 Maintenance Fees

FEATURES

Year Built: 1982

Listed By: Oakwyn Realty Downtown Ltd.



rennie