

# 210 1466 Pemberton Avenue, Squamish

\$719,000



Introducing Marina Estates, a limited collection of luxury condominiums in the heart of Downtown Squamish. This beautifully renovated home boasts 2 large bedrooms 2 spa-inspired Bathrooms, gas fireplace with stunning mountain & city views. Bed/bath on either side of the living space, retail storefronts just a minute walk away and is close to all major amenities; restaurants, coffee shops, groceries and shopping while being tucked away with a perfect blend of city and nature.

## KEY INFORMATION

MLS® R2558979

Residential Attached

Downtown Squamish

2 Bedrooms

2 Bathrooms

1,072 SF

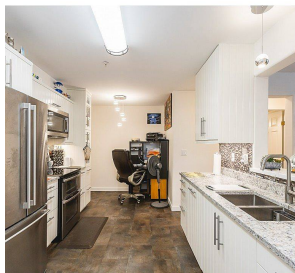
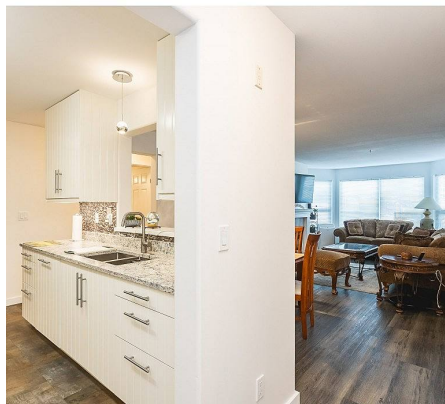
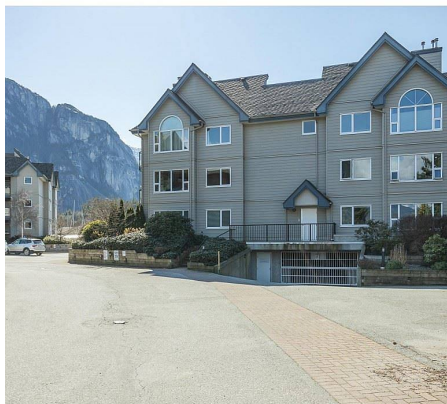
\$372.40 Maintenance Fees

## FEATURES

Year Built: 1997

Views: MOUNTAIN & CITY

Listed By: Stonehaus Realty Corp.



rennie