

1903 6659 Southoaks Crescent, Burnaby

\$928,000



Big, bright, updated & beautiful 17 year old, Bosa built Gemini II, SE corner unit with amazing unobstructed views! Close to Library & Community Centre, Highgate Shopping, transit, park & Windsor Elementary School, Byrne Creek Community School & Burnaby South Secondary. This lovely suite features open plan, laminate floors, stainless steel appliances and granite countertop, gas fireplace, huge balcony, ensuite laundry, master bdrm with 4 pc ensuite with soaker tub, 2 side by side sought after parking stalls. This extremely well maintained & managed building features amenities room with kitchen, exercise room, caretaker, bike storage. Call now to book your private appointment!

KEY INFORMATION

MLS® R2557956

Residential Attached

Highgate

2 Bedrooms

2 Bathrooms

1,160 SF

\$421.95 Maintenance Fees

FEATURES

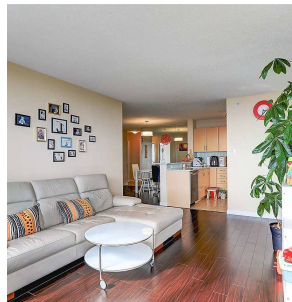
Year Built: 2003

Views: CITY, PARK, WATER

Listed By: LeHomes Realty



1903 6659 Southoaks Crescent Burnaby
EVERESTPHOTO
Mat



rennie