

# 1333 The Crescent, Vancouver

\$5,998,000



Once in a blue moon chance to own a property with VIEW at THE CRESCENT, the most SUPREME location in Vancouver. Elegant, Classy, Unique, Character townhouse rarely available to the public since 1993. Only 4 units in this gated complex. Close to 4000 sqft big as a house for your luxury enjoyment. Super quality, space, floor plan & privacy. Private elevator & secure parking. Big patio surrounded by nice garden for BBQ. High ceiling, H/W floor, new paint in & out. Entrance front to the Shaughnessy Park. Act now. All measurement approximate to be verified by the buyer.

## KEY INFORMATION

MLS® R2554740

Residential Attached

Shaughnessy

4 Bedrooms

4 Bathrooms

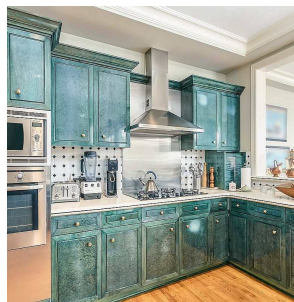
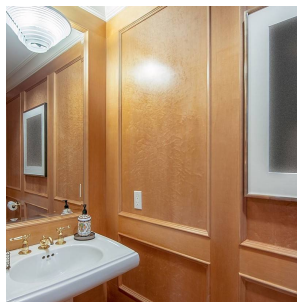
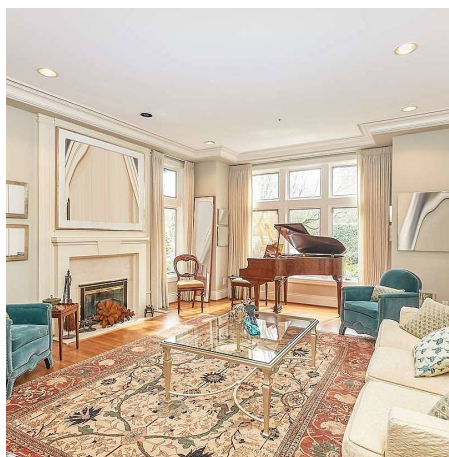
3,950 SF

## FEATURES

Year Built: 1911

Views: Mountain & tree

Listed By: Sutton Group-West Coast Realty



rennie