

1002 4360 Beresford Street, Burnaby

\$1,348,000



Rare opportunity to own this sought after **DISTINCTIVE FLOORPLAN**, spanning over an entire side of the building, with 2 large decks, 2 bedrooms, 2 bathrooms, 3 **PARKING** (1 EV with installed charger, plus 2 regular stalls). This unit includes the developer installed **UPGRADED HARDWOOD FLOORS** in both bedrooms plus **CUSTOM FEATURES** like: black out blinds in both bedrooms, large custom built in Safe and extra cabinetry. Enjoy sunsets and mountain views all the way to Vancouver downtown and Lions Gate Bridge. Ovation **GOLD** Winning development **MODELLO** by Boffo can easily be regarded as the **BEST** high-end luxury Condo **BUILDING** in Metrotown featuring **MIELE** appliances, **CONCIERGE** service, **GYM**, **HOT TUB**, **STEAM ROOM**, owners' lounges, views, walking distance to Metrotown Mall, Skytrain and restaurants.

KEY INFORMATION

MLS® R2554225

Residential Attached

Metrotown

2 Bedrooms

2 Bathrooms

1,265 SF

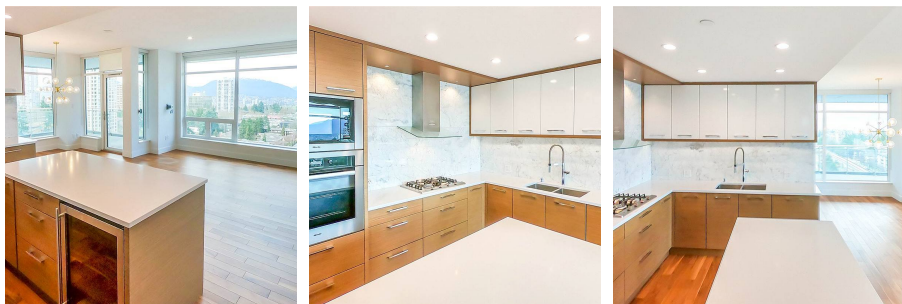
\$802.69 Maintenance Fees

FEATURES

Year Built: 2017

Views: Mountains, City,

Listed By: Globus International Real Estate Inc.



rennie