

21582 121 Avenue, Maple Ridge

\$1,200,000



ATTENTION INVESTORS, BUILDERS, DEVELOPERS! This huge 14000 sqft corner lot in West Central Maple Ridge with a 2 story home, featured 3 Bedrooms ,2 Bath and newly renovated upstairs kitchen. Separate entrance with 2 kitchen setup give this property a great rental potential. The property is a great choice for family, personal, investment oppty, holding property with huge potential return of Condos/Townhomes in the future. Whether you simply want to Build, Develop or Hold for future opportunities this corner large lot is close to Community, Shopping, Transit and Schools. The homes is in great shape and could also provide great rental income. Rare large residential lot in the area beautified by the developing & vibrant City of Maple Ridge.

KEY INFORMATION

MLS® R2552108

Residential Detached

West Central

3 Bedrooms

2 Bathrooms

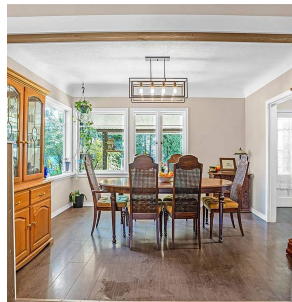
1,920 SF

13,092 SF Lot

FEATURES

Year Built: 1944

Listed By: LeHomes Realty



rennie