

2102 888 Hamilton Street, Vancouver

\$1,098,000



Welcome to this desirable, bright upper unit in Rosedale Garden, at the edge of Yaletown! This 2 bed 2 bath + den home features grand windows boasting south facing and open city views of Yaletown from both bedrooms and the living area. With almost 1,000 sqft of living space, this efficient floor plan is in very good condition and could also offer the perfect opportunity to renovate. The '02 floor plan is arguably the best layout and location in the building offering complete privacy from neighbouring buildings. This property includes a 57 square foot balcony, 2 parking stalls and one locker. The piping, lobby, elevators and hallways have been completely redone. Don't miss out on this popular building conveniently located near shops, public transit and great restaurants!

KEY INFORMATION

MLS® R2551934

Residential Attached

Downtown

2 Bedrooms

2 Bathrooms

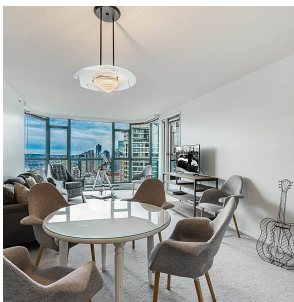
995 SF

\$407.48 Maintenance Fees

FEATURES

Year Built: 1993

Listed By: Angell, Hasman & Associates Realty Ltd.



rennie