

# 6245 Dundee Place, Chilliwack

\$749,800



Investor Alert! BUILT IN TENANT WITH LEASE WHICH MUST BE ASSUMED. Great location for a 4 to 5 Bedroom home in Sardis. Wide Lot allows driveway access to back yard for a boat or even a motorhome. Bareland strata is \$70 per month. Close to schools and shopping. Chilliwack is growing at a rapid speed, get in now.

## KEY INFORMATION

MLS® R2550962

Residential Detached

Chilliwack

4 Bedrooms

3 Bathrooms

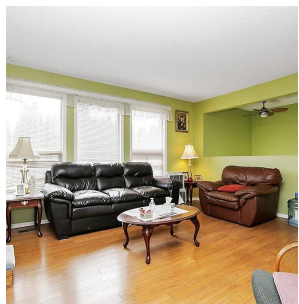
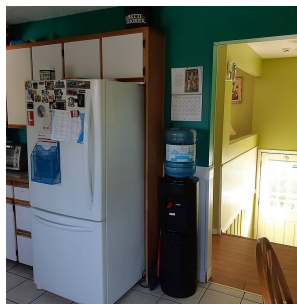
1,985 SF

5,780 SF Lot

## FEATURES

Year Built: 1987

Listed By: Sutton Group-West Coast Realty (Surrey/24)



rennie