

118 46289 Yale Road, Chilliwack

\$285,000



Come home to this beautiful corner, ground floor, 2 bed/2 bath unit in Newmark. Combining both form & function this 871 sq.ft. residence features oversized windows, modern kitchen with S/S appliances + shaker cabinets and ideal split bedroom layout. Escape to your master bedroom retreat with large walk-in closet and ensuite. Enjoy access to your outdoor area off of your kitchen. Ideal for entertaining or alfresco dining. AMAZING WALK SCORE, just steps to restaurants, transit, grocers, schools and close to popular recreational spot like Bridal Falls Waterpark and Cultus lake! BONUS -2 parking stalls included. Book your private appointment today.

KEY INFORMATION

MLS® R2548459

Residential Attached

Chilliwack

2 Bedrooms

2 Bathrooms

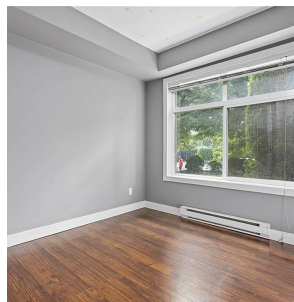
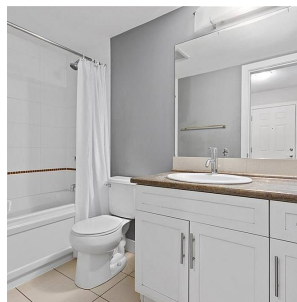
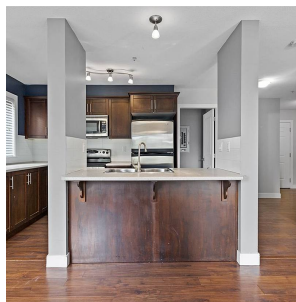
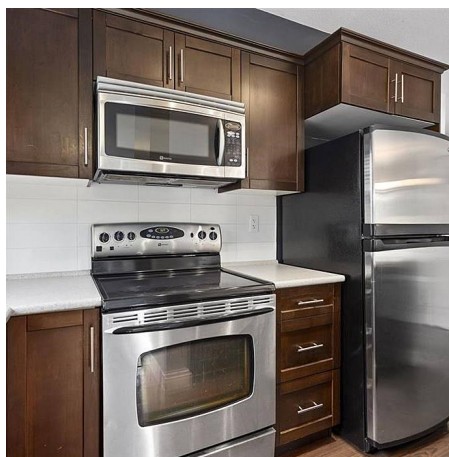
871 SF

\$314.63 Maintenance Fees

FEATURES

Year Built: 2008

Listed By: HomeLife Advantage Realty Ltd (Vedder)



rennie