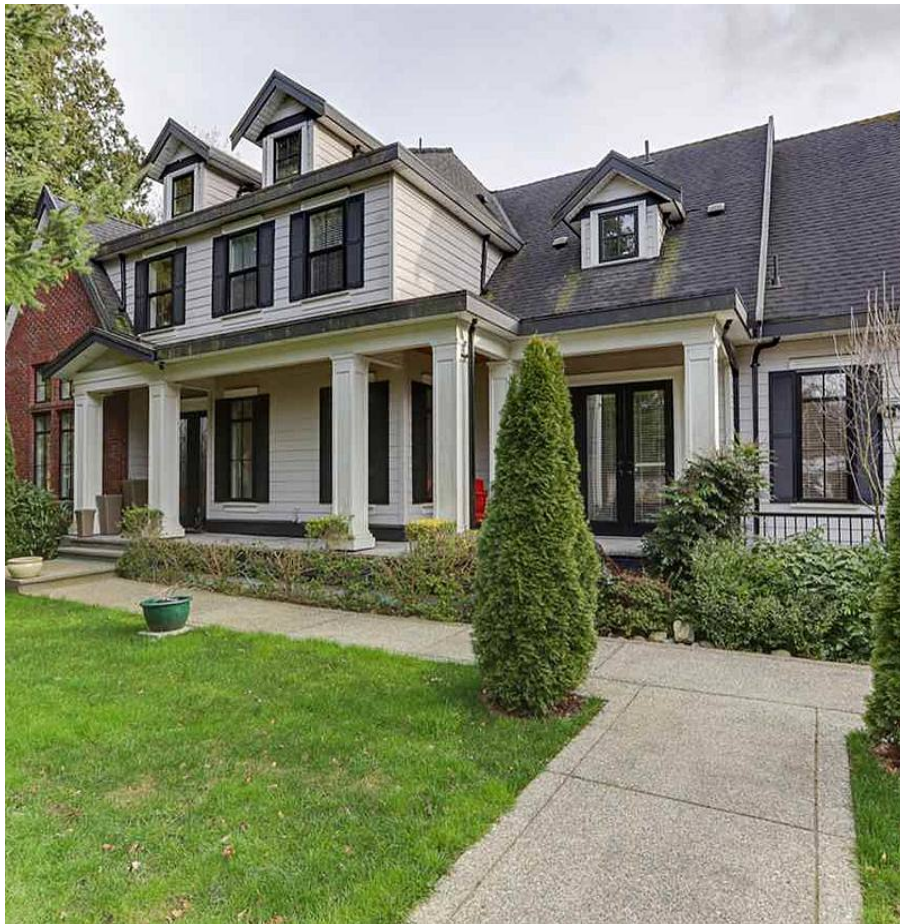


17246 4 Avenue, Surrey

\$2,399,900



VIEW VIRTUAL TOUR LINKWow! Amazing Custom Built Executive Home With Character. Sitting On A Large 13,982SQFT South Facing Lot. This Home Features An Open Concept Plan With 7 Bedrooms/6 Baths and Soaring High Ceilings. You Will Love The Gourmet Style Chef?s Kitchen W/ Separate Spice Kitchen. Main Floor Laundry, Office & Walkout From Kitchen To Large Deck. Legal 2 Bedroom Suite Plus 1 Bedroom Unauthorized In Law Suite To Help Generate Great Income. Home has Air Conditioner. This Home Has Privacy & Great Curb Appeal Overlooking Beautiful ALR Land Across From It. Very Close To The US Border, 5 mins to White Rock Beach and Quick Access To The Freeway. Few Mins To Nearby Peace Portal Golf Course and Douglas Elementary School. Shows Like A Lottery Home!

KEY INFORMATION

MLS® R2547118

Residential Detached

Pacific Douglas

7 Bedrooms

6 Bathrooms

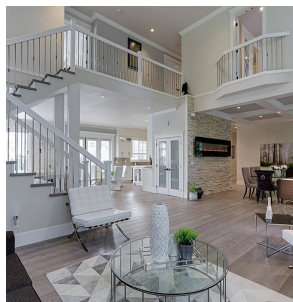
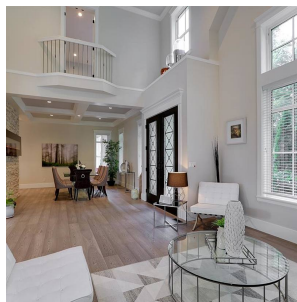
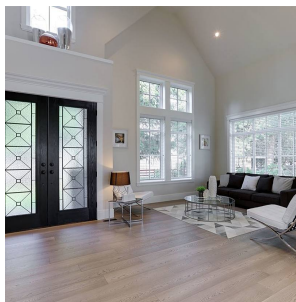
5,008 SF

13,982 SF Lot

FEATURES

Year Built: 2012

Listed By: eXp Realty



rennie