

3600 Raymond Avenue, Richmond

\$1,999,000



Rare 9259 SF (87' x 106.5') south-exposed corner lot in the heart of Seafair neighbourhood. Great room on main level, open kitchen with granite eating bar, counter tops; gas fireplace. 2 full baths. Maple hardwood floors the upper level. Tiled flooring at foyer. laundry rooms lead to private back yard. Double garage and more parking spaces. House was well kept, good for holding or rebuilding. No interior showing until offer accepted.

KEY INFORMATION

MLS® R2546485

Residential Detached

Seafair

3 Bedrooms

2 Bathrooms

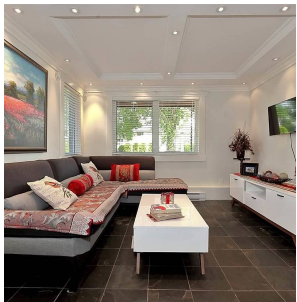
1,611 SF

9,259 SF Lot

FEATURES

Year Built: 1958

Listed By: Royal Pacific Realty Corp.



rennie