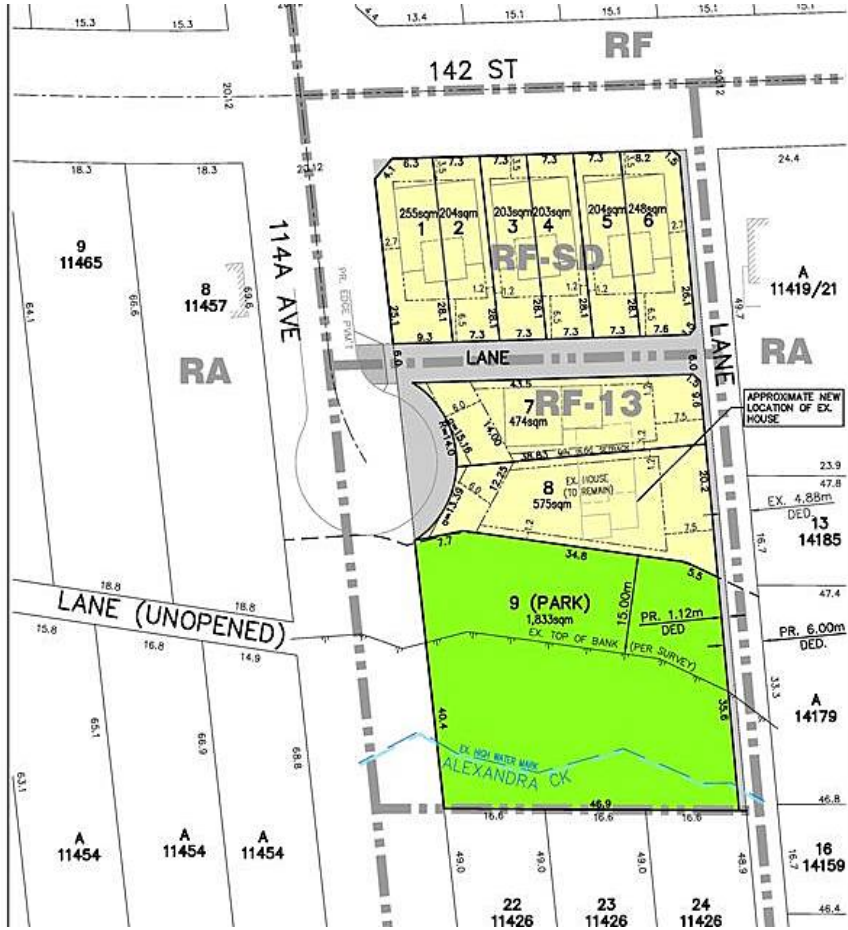


# 11431 142 Street, Surrey

\$3,750,000



Prime 1.15 acre development parcel near downtown Surrey! There is a proposed plan for 8 lots: 6 duplex lots, 1 RF-13 lot and the existing house can stay! You can also bring your own ideas for development. The existing house is a renovated 2 storey home with an unfinished basement, loads of potential! One of the very few acres available in Surrey for development, take advantage of this opportunity!

## KEY INFORMATION

MLS® R2546258

Residential Detached

Bolivar Heights

5 Bedrooms

2 Bathrooms

2,298 SF

50,094 SF Lot

## FEATURES

Year Built: 9999

Listed By: Sutton Premier Realty