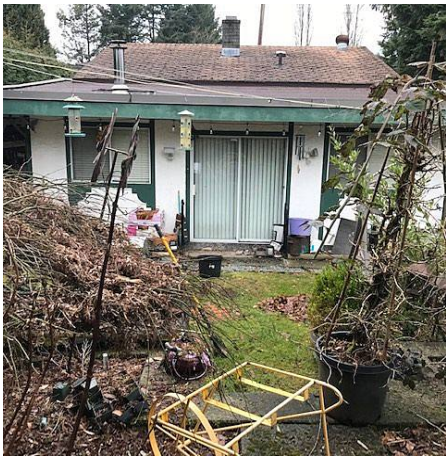


640 Clarke Road, Coquitlam

\$3,335,000



WEST COQUITLAM DEVELOPERS and INVESTORS - Currently zoned RT-1 and the Southwest Coquitlam Area Plan calls for medium density apartment. The lot totals approximately 8778 square feet. Conveniently located in the Burquitlam Lougheed Neighborhood Plan. New developments are being built and are proposed all around this property. Near the Burquitlam Skytrain Station, bus, schools, SFU, parks and shopping. The home and out buildings are still livable, making this a great holding property for investors. Measurements are approximate, buyer to verify if important. Call today for an information package.

KEY INFORMATION

MLS® R2545856

Residential Detached

Coquitlam West

2 Bedrooms

1 Bathroom

1,381 SF

8,778 SF Lot

FEATURES

Year Built: 1956

Listed By: RE/MAX Sabre Realty Group

rennie