

# 113 10838 Whalley Boulevard, Surrey

\$538,800



Maverick by Tien Sher. This beautifully designed 5 storey building features this Garden level unit with a large private gated entrance. Featuring a open floor plan, a chef's kitchen, wide plank flooring, 9' ceilings with lots of windows, a spacious 2 bedrooms/2 bathrooms with elegant upgraded finishings along with a private 435 sq ft outdoor patio space that says to garden lovers a big hello! This master community plan has been "SOLD OUT" in record time in Whalley and been the focus of Arts and Culture while having all the conveniences of shopping, restaurants, Surrey Memorial Hospital, SFU Campus, City Hall & Skytrain minutes away, There's also a large 10,000 amenities space, including gym, clubhouse, Billiards & O/D gardens! This is an assignment & expected to complete by end May 2021.

## KEY INFORMATION

MLS® R2544801

Residential Attached

Whalley

2 Bedrooms

2 Bathrooms

776 SF

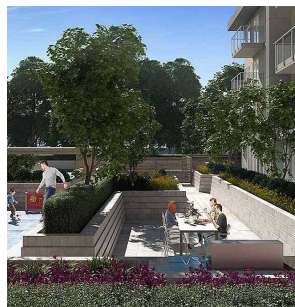
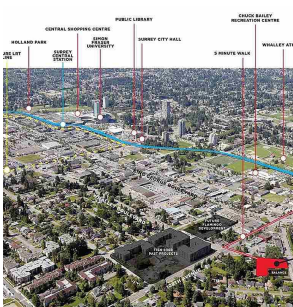
\$284.92 Maintenance Fees

## FEATURES

Year Built: 2021

Views: Extra large Garden Patio

Listed By: Sutton Group-West Coast Realty



rennie