

410 13919 Fraser Highway, Surrey

\$549,900



Location Location Location... You'll find it here at the Maxx @ Verve, This bright and spacious 2 bed +2 bath condo is on the private / quiet back side of the building. This top floor unit boasts 11ft vaulted ceilings and opens onto a covered balcony. Includes stainless steel appliances, a breakfast bar, quartz counter tops and vaulted ceiling. This modern lifestyle complex includes a gym, 2 party rooms, a meeting room, and guest suite all just steps away from the bustling intersection of Fraser Hwy and King George Blvd. Secured parking, surveillance cameras, approved EV stations and a storage locker. Pets with restrictions and rentals allowed. Just a 5-minute walk to the Sky Train and a few steps more to the SFU campus and Central City shopping and dining. Showings by appointment only.

KEY INFORMATION

MLS® R2544270

Residential Attached

Whalley

2 Bedrooms

2 Bathrooms

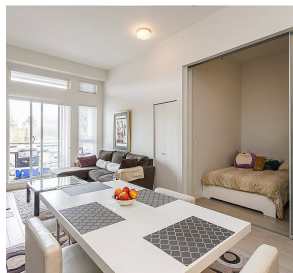
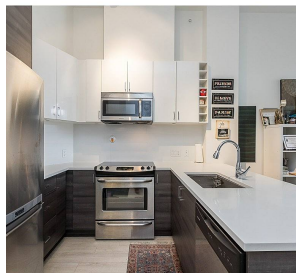
786 SF

\$245.53 Maintenance Fees

FEATURES

Year Built: 2015

Listed By: Momentum Realty Inc.



rennie