

1608 2388 Madison Avenue, Burnaby

\$839,000



In Fulton House-another impressive work by Polygon, people enjoys a high standard of living which consists of modern elegance of the bldg & convenience in the thriving Brentwood town cntr. This homey unit offers capacious layout as well as efficient use of space. A den big enough for a bed. Ample natural light for each room. Open concept kitchen comes with a trendy look & name-branded appliances. Living room and extra large balcony offer stunning 270° view and sight of north-shore mountain from afar. Full amenities: generously spaced club house, Gym cntr and Yoga room, Swimming pool, hot tub & sauna. Benefits of living this neighborhood: multiple transit options, commercial zone packed with various stores & restaurants.

KEY INFORMATION

MLS® R2543278

Residential Attached

Brentwood Park

2 Bedrooms

2 Bathrooms

827 SF

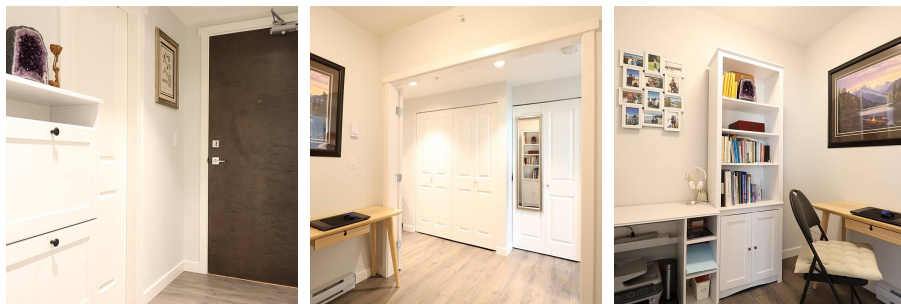
\$338.15 Maintenance Fees

FEATURES

Year Built: 2020

Views: Mountain and City

Listed By: Metro Edge Realty



rennie