

38608 Westway Avenue, Squamish

\$1,899,000



Stunning 4 Bedroom Home (+ Carriage House) located in Raven's Plateau, backing on to the Stawamus River! This home was custom built in 2010 on a large 10,870 Sq Ft Lot with direct access to an endless network of trails for adventuring. The main floor features a 4th bedroom /or office, open concept living/dining and kitchen area with vaulted ceilings, large windows, and cozy gas fireplace. Upstairs hosts the master bedroom, 5 piece ensuite, large WIC, 2 additional bedrooms and full bath. Both Garage spaces (1600 Sq Ft +) have been updated in the past few years with Epoxy Flooring, and Custom Hayley Cabinets. Outdoor space includes a large covered wrap around deck (room for a hot tub), yard space, gardens, and back gate leading you directly to a trail network! Call now.

KEY INFORMATION

MLS® R2541932

Residential Detached

Valleycliffe

5 Bedrooms

4 Bathrooms

2,792 SF

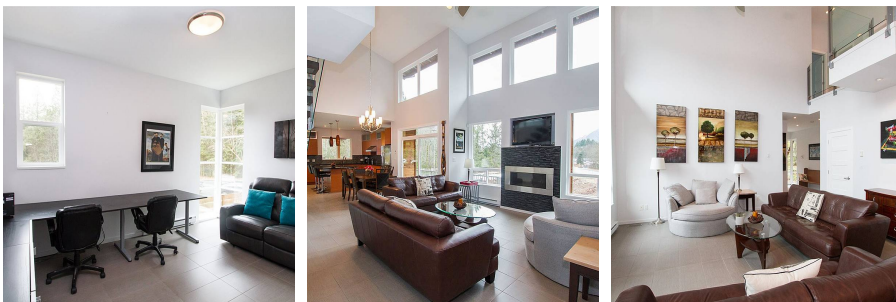
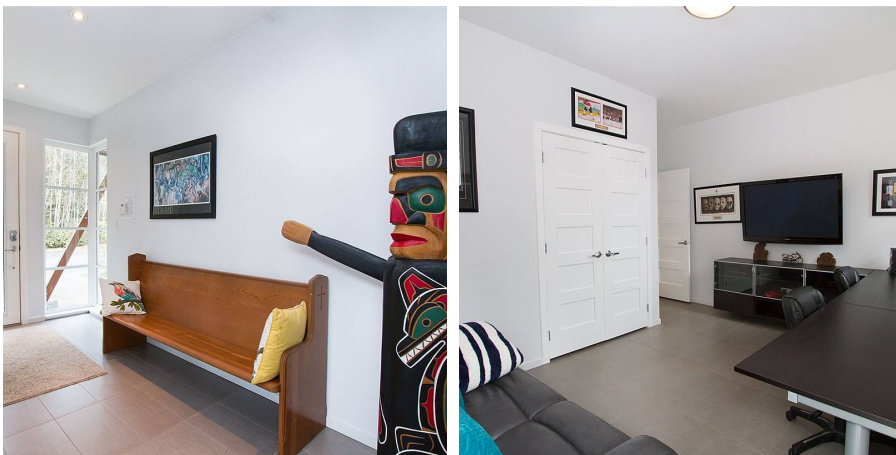
10,871 SF Lot

FEATURES

Year Built: 2010

Views: Mountain View

Listed By: Elevate Performance Realty & Management



rennie