

1006 9133 Hemlock Drive, Richmond

\$699,800



Bright-corner-unit at Sequoia Tower-in--Hampton Park. Excellent layout with 2 ensuites on separate side of the living room which offers privacy and comfortable living. North-East corner with unobstructed view of North Shore mountains. Granite counter top, sleek black appliances. 2 side-by-side Parking stalls and 1 Locker. Close to all amenities, shopping, transit, schools and park.

KEY INFORMATION

MLS® R2541744

Residential Attached

Mc Lennan North

2 Bedrooms

2 Bathrooms

962 SF

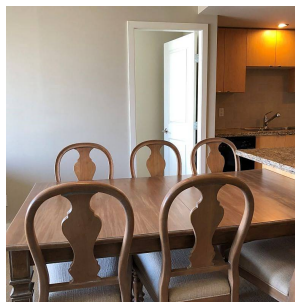
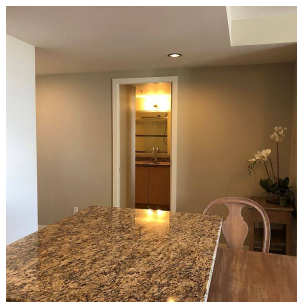
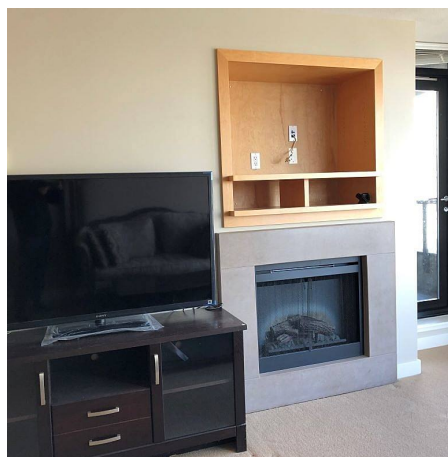
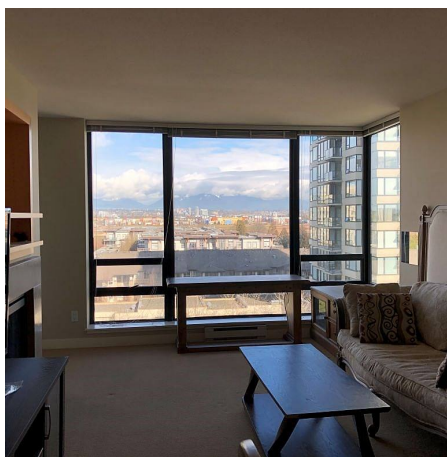
\$460.00 Maintenance Fees

FEATURES

Year Built: 2004

Views: NORTH MOUNTAINS

Listed By: Royal Pacific Riverside Realty Ltd.



rennie