

# 14222 29a Avenue, Surrey

\$3,098,000



ELGIN PARK'S FINEST! Magnificent 5572SF 3 storey home located majestically on a 14941SF S.W. facing lot w/park & forest on both sides for COMPLETE PRIVACY. COMPLETELY UPDATED, the layout is well thought out with a 3 car garage, games & rec rooms, wine room & incredible resort style outdoor space with in-ground pool & hot tub. The flat yard backs onto a forested park area with walking trails. The chef's kitchen equipped with Miele appliances and a large wok kitchen. The family room with lofted ceilings & soaring windows opens to a gorgeous sun room letting in an abundance of natural light and gorgeous backyard view. The rec/games/media rooms on the lower level give your family space to play. Each bedroom is well appointed with 3 bathrooms on the upper level. Truly a remarkable family home!

## KEY INFORMATION

MLS® R2540918

Residential Detached

Elgin Chantrell

4 Bedrooms

5 Bathrooms

5,572 SF

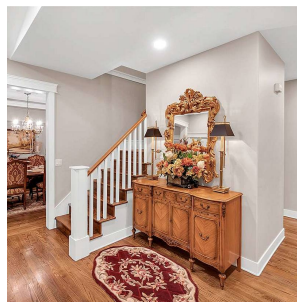
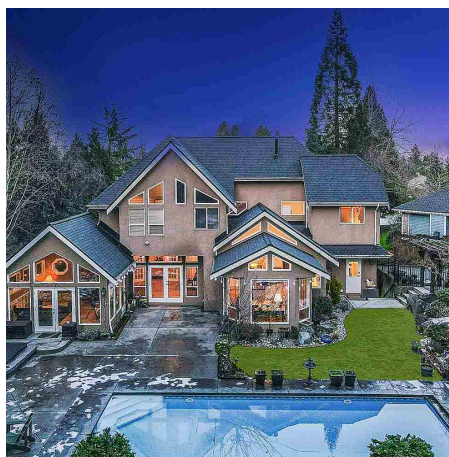
14,941 SF Lot

## FEATURES

Year Built: 1999

Views: Green space

Listed By: RE/MAX Select Properties



rennie