

402 8084 120a Street, Surrey

\$461,888



This is a beautiful corner unit situated on the top floor of the building in a great central location, with nearby amenities such as shopping complexes and transit being a 5 minute walk away. As you enter the east/south facing unit you're greeted by a lovely kitchen with stainless steel appliances and granite counter tops with a functional layout that boasts a large livingroom. The lovely unit has large windows which amplifies the spacious ambiance that the home provides for a great family.

KEY INFORMATION

MLS® R2540280

Residential Attached

Queen Mary Park

2 Bedrooms

1 Bathroom

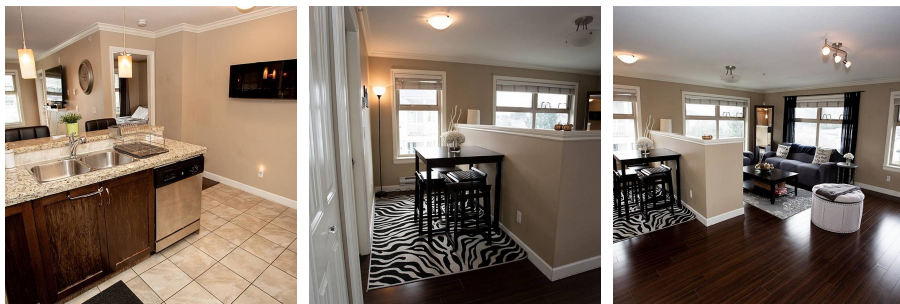
876 SF

\$295.78 Maintenance Fees

FEATURES

Year Built: 2008

Listed By: eXp Realty (Branch)



rennie