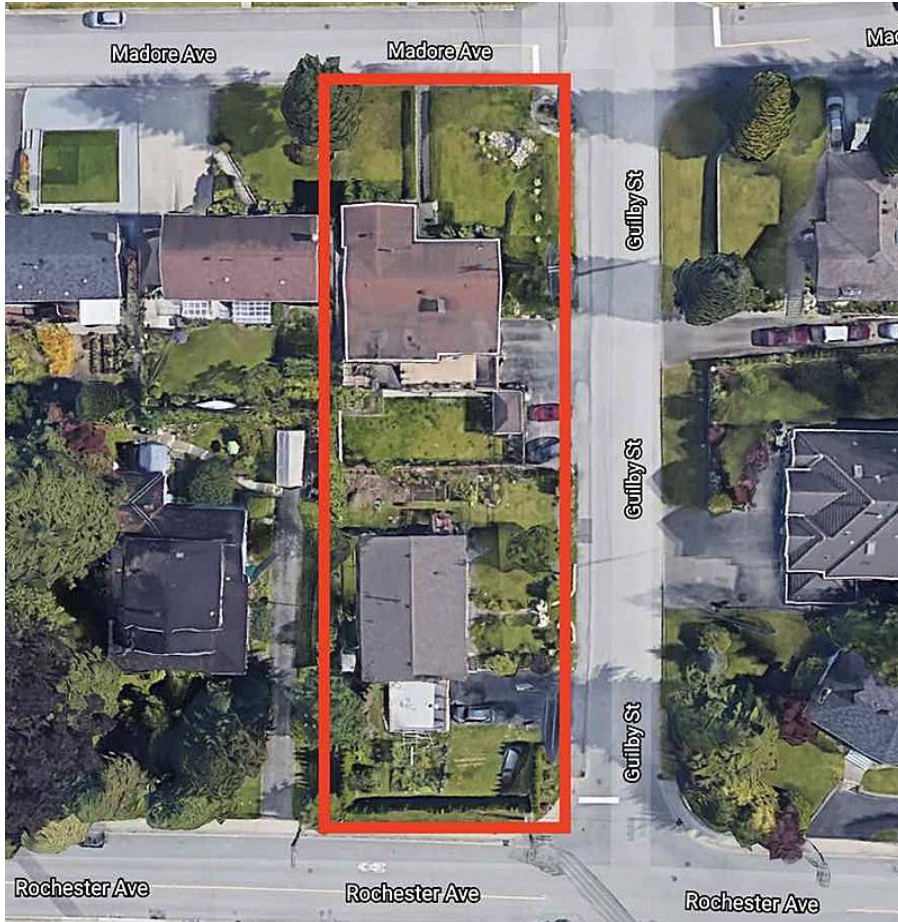


608 Madore Avenue, Coquitlam

\$2,592,000



DEVELOPMENT POTENTIAL! INVESTORS ALERT! Together 17424 Sqft. development property in a well sought after area of Coquitlam (Must be sold together with 402 Guilby Street (MLS# R2538873))

KEY INFORMATION

MLS® R2538874

Residential Detached

Coquitlam West

6 Bedrooms

4 Bathrooms

3,162 SF

8,640 SF Lot

FEATURES

Year Built: 1974

Listed By: Sutton Group-West Coast Realty (Surrey/120)

