

409 10838 Whalley Boulevard, Surrey

\$639,900



BEST VIEWS IN THE COMPLEX! BIG open, airy 2 Bdrm, 2 Bath PLUS Den (almost 1000 sq ft) and large, private, outdoor living balcony with **AWESOME** views of the New Westminster, Metrotown and the North Shore Mountains. Corner unit in the **BEST** part of the building feature 9 ft ceilings, one parking, one storage. High end finishes, wood grain and white laminate two tone kitchen with integrated appliances, counter depth bottom freezer refrigerator, integrated dishwasher, solid quartz counter-tops and outstanding exclusive amenity space. Expansive windows highlight the view making this home feel even bigger than it is.

KEY INFORMATION

MLS® R2540067

Residential Attached

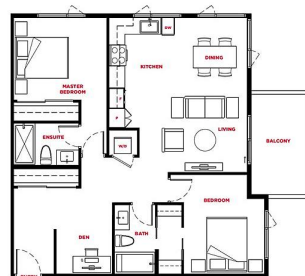
Bolivar Heights

2 Bedrooms

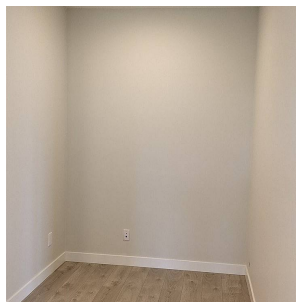
2 Bathrooms

961 SF

\$352.20 Maintenance Fees



LEVELS 2-4 LEVEL 5



FEATURES

Year Built: 2021

Views: NORTH SHORE MOUNTAINS

Listed By: RE/MAX Westcoast

rennie