

506 280 Ross Drive, New Westminster

\$599,900



FUSION INSPIRED: Where indoor indulgence meets outdoor exuberance! That's right! Combine this highly functional & spacious 2 bed/2 bath, 994 sf. SW corner unit W/9 ft. ceilings W/a fully covered 400 sf. patio in a highly rated 10 year young concrete building located in the charming neighbourhood of Victoria Hill adjacent to Queens Park & Glenbrook Ravine Park and that's what you get! The Best of Both Worlds! Features low maintenance fees, SS Whirlpool appliance package W/gas stove, granite counter-tops & pantry. Pet friendly,(1 dog + 1 cat) rentals permitted. Includes 1 parking and 1 storage unit. Building features gym, social room & 2 guest suites. Call your Realtor to indulge yourself with a viewing of this serious opportunity. Priced to sell! Move quickly! Offers if any Tuesday Feb. 23.

KEY INFORMATION

MLS® R2539854

Residential Attached

Fraserview

2 Bedrooms

2 Bathrooms

994 SF

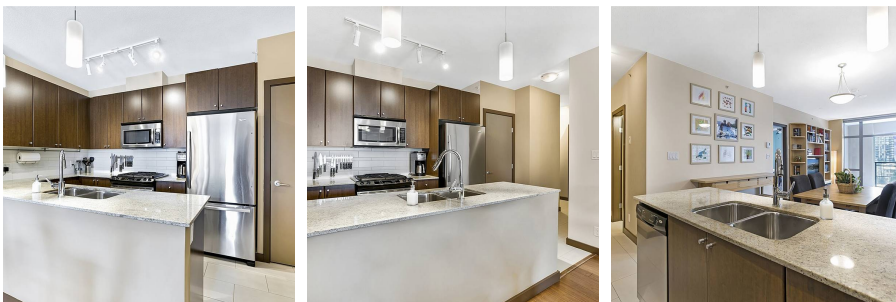
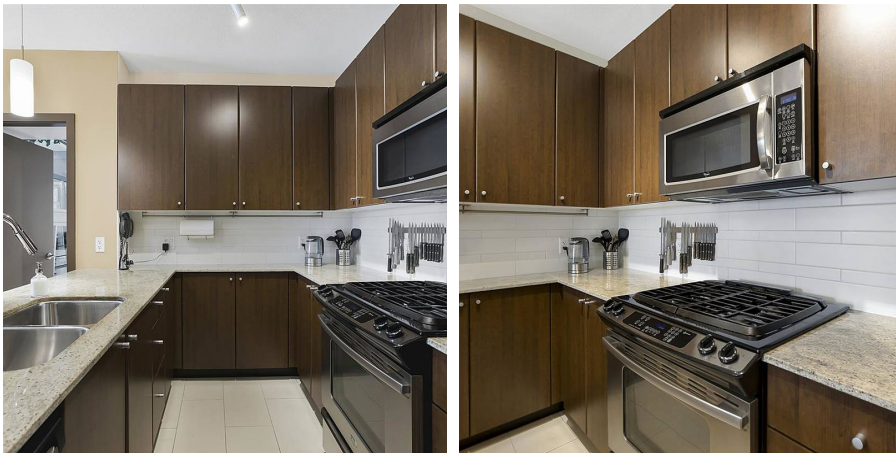
\$415.26 Maintenance Fees

FEATURES

Year Built: 2010

Views: MT. BAKER

Listed By: Team 3000 Realty Ltd.



rennie