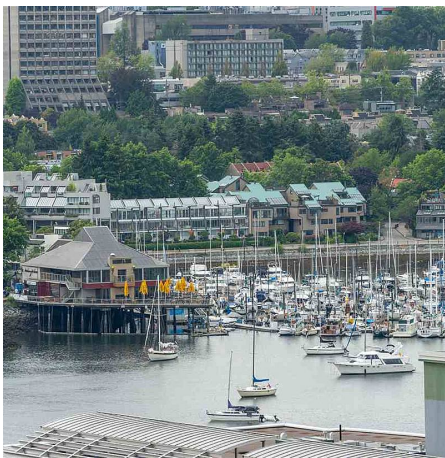
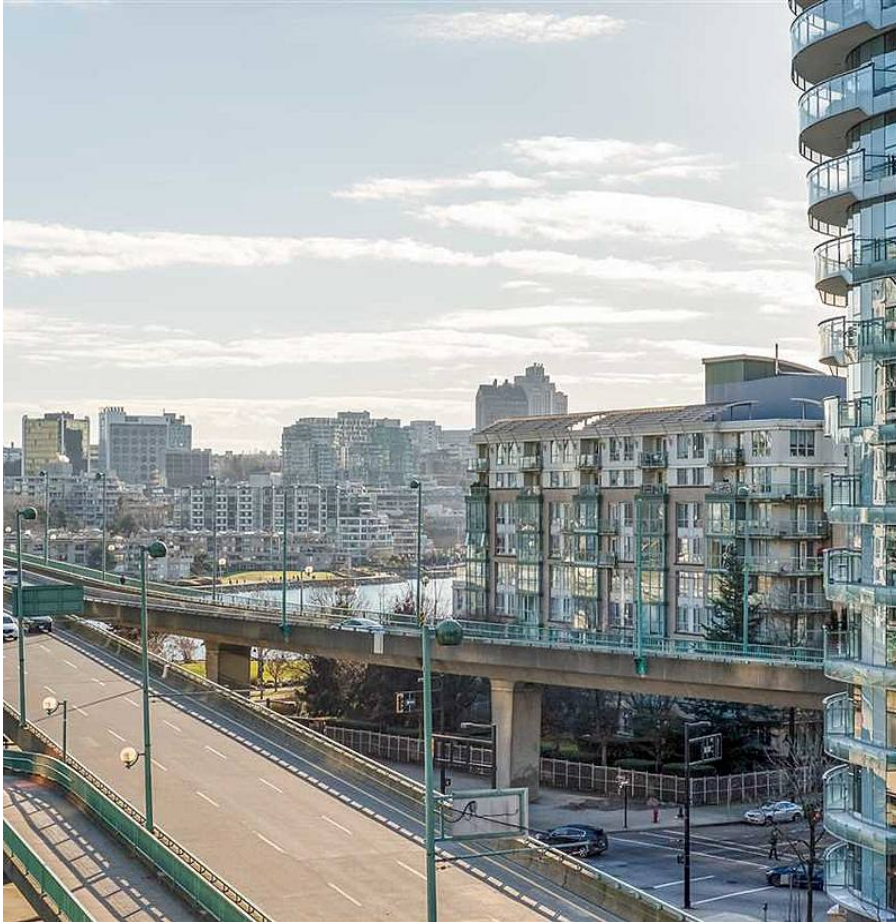


717 68 Smithe Street, Vancouver

\$685,000



One Pacific by Concord is one of Vancouver's most coveted buildings! Located across the street from SE False Creek seawall, a 5 min walk to Stadium/ Yaletown skytrain stations, & shopping/grocery stores nearby. Our 1 bed + flex is perfectly laid out for max comfort. Some warranties still intact, this home features city and False Creek views, triple pane window systems, AC, marble backsplashes in the bathroom and a chef's linear kitchen. **BONUS:** extra large parking and additional storage locker downstairs included! World class amenities include: cruise inspired swimming pool with glass bottom, hot tub, fire pit, gym at the new Arc by Concord building, rooftop children's play area, and bbq. Appointments Sat Feb 13 from 2-4pm OR call to schedule another time! 3D virtual tour in link.

KEY INFORMATION

MLS® R2537983

Residential Attached

Downtown

1 Bedroom

1 Bathroom

505 SF

\$339.84 Maintenance Fees

FEATURES

Year Built: 2016

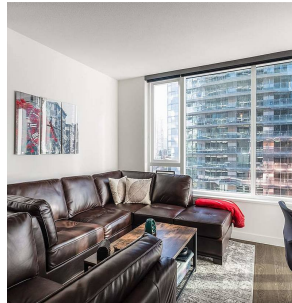
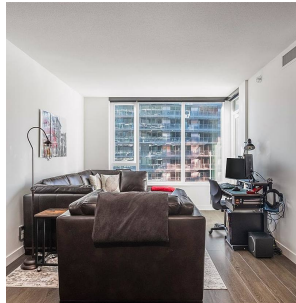
Views: W: SOME FALSE CREEK

Listed By: rennie & associates realty ltd.

CIVIL
PACIFIC



A PLAN Plans 3-19
INTERCOM - PL 10K
Exterior Area 500 - 595 sq. ft.
Outdoor Space 381 - 454 sq. ft.
1000' x 1000' 543 - 597 sq. ft.



Jane Chu PREC*
778.886.3303
janechu@rennie.com
rennie.com/janechu

rennie