

# 101 488 Furness Street, New Westminster

\$965,900



Located in the historic heart of Queensborough in New Westminster, Portside is a collection of 170 move-in ready townhomes and duplexes situated on the Fraser River, overlooking downtown New Westminster. Home range from 2 to 4 bedrooms and have 2-car garages, vaulted 10 foot ceilings in the master bedrooms, and spacious living areas. Your new favourite shops, restaurants, and parks are right here in the Queensborough community and just across the river in New Westminster. Our first phase includes townhome and duplexes ranging from 1180 sq.ft. to 1780 sq.ft. These homes have space to play and room to grow with spacious floorplans and outdoor entertainment areas. Open by appointment.

## KEY INFORMATION

MLS® R2535618

Residential Attached

Queensborough

4 Bedrooms

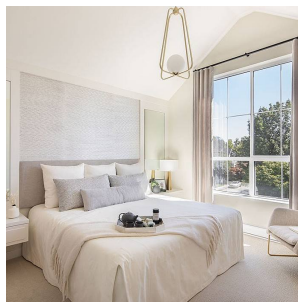
4 Bathrooms

1,578 SF

## FEATURES

Year Built: 2022

Listed By: Anthem Realty Ltd.



rennie