

# 37069 Whelan Road, Abbotsford

\$2,799,000



No words can fully describe this timeless classic designed home in East Abbotsford on top of Sumas Mountain. Flat nearly 5 acres with over 6,800SF of beautiful living space plus attached 14' high over-sized 4 car garage. All 5 bedrooms with ensuite bathrooms and huge walk-in closets. Entertainment sized Kitchen with built-in Thermador appliances. Huge man-made trout-stocked lake even has white sand beach, fountain and concrete bridge to the little island. High-end timeless materials, design and workmanship. It just feels like staying in private 5 star resort all year round. Helipad, Tennis/Basket ball court, Automatic gate, Diesel backup generator, etc. There is nothing else like it on Sumas Mountain.

## KEY INFORMATION

MLS® R2536376

Residential Detached

Sumas Mountain

5 Bedrooms

7 Bathrooms

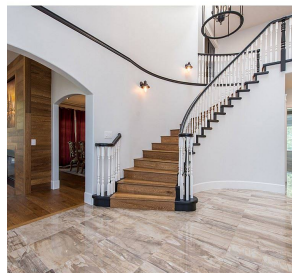
6,816 SF

## FEATURES

Year Built: 1994

Views: Private Lake & Forest

Listed By: Sutton Group-West Coast Realty (Abbotsford)



rennie