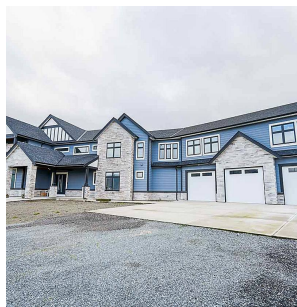
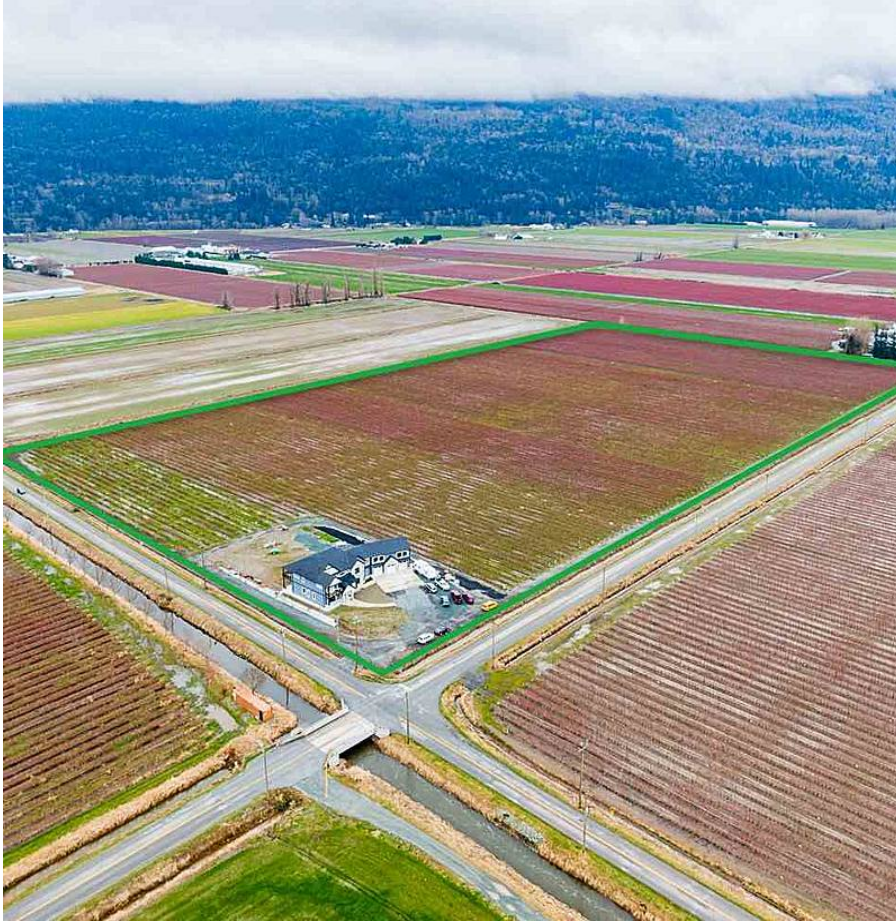


# 40320 No. 5 Road, Abbotsford

\$4,999,900



HIGH EXPOSURE CORNER PROPERTY on Interprovincial Hwy & No.5 Rd. Large 1500+ ft frontage! 30.27 Acres w/ custom 2017 built, 6015 sqft, 5 bdrm (6 w/ office)/6 bath home. Downstairs has a 684 sq ft covered deck, upstairs has 2 balconies totaling 714 sq ft. House features a beautiful main kitchen w/ JennAir appliance package, plus a spice kitchen. Second floor features large area open to the main floor, approx 620 sq ft. Lg rec room w/ bar, great for entertaining. Large patio area out back w/ propane outlets, plumbing, and speakers, ready for an outdoor kitchen & entertaining. Oversized 1467 sqft garage. Very well maintained property w/ Elliot, Duke, & Reka varieties set up w/ drip irrigation, poles, wires, ready for machine harvest. 335,000 lb avg production. Easy access to Hwy 1. City water.

## KEY INFORMATION

MLS® R2536110

Residential Detached

Sumas Prairie

5 Bedrooms

6 Bathrooms

6,015 SF

1,318,561 SF Lot

## FEATURES

Year Built: 2017

Views: Mountains

Listed By: B.C. Farm & Ranch Realty Corp.

rennie