

# 1038 E 14th Avenue, Vancouver

\$1,139,000



Rare 2 bedroom, 1 bathroom, 951 sq ft modern infill home in the coveted Charles Dickens catchment. This spacious 2 level home features a bright and open main floor with a sleek modern kitchen, comfortable living and dining areas, plus oak hardwood floors throughout. Top floor offers 10-8' vaulted ceilings, 2 spacious bedrooms, in-suite laundry, plus a spa-like bathroom. With a large outdoor patio area, more than 450 SQ FT of crawl space, and a private single car garage, this city home checks off all the boxes.

## KEY INFORMATION

MLS® R2535321

Residential Attached

Mount Pleasant

2 Bedrooms

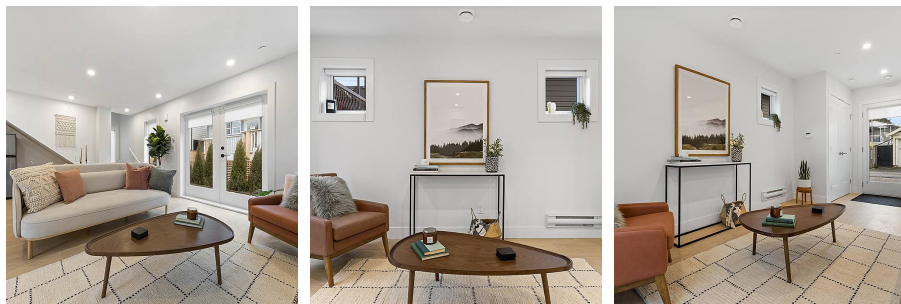
1 Bathroom

951 SF

## FEATURES

Year Built: 2021

Listed By: Stilhavn Real Estate Services



rennie