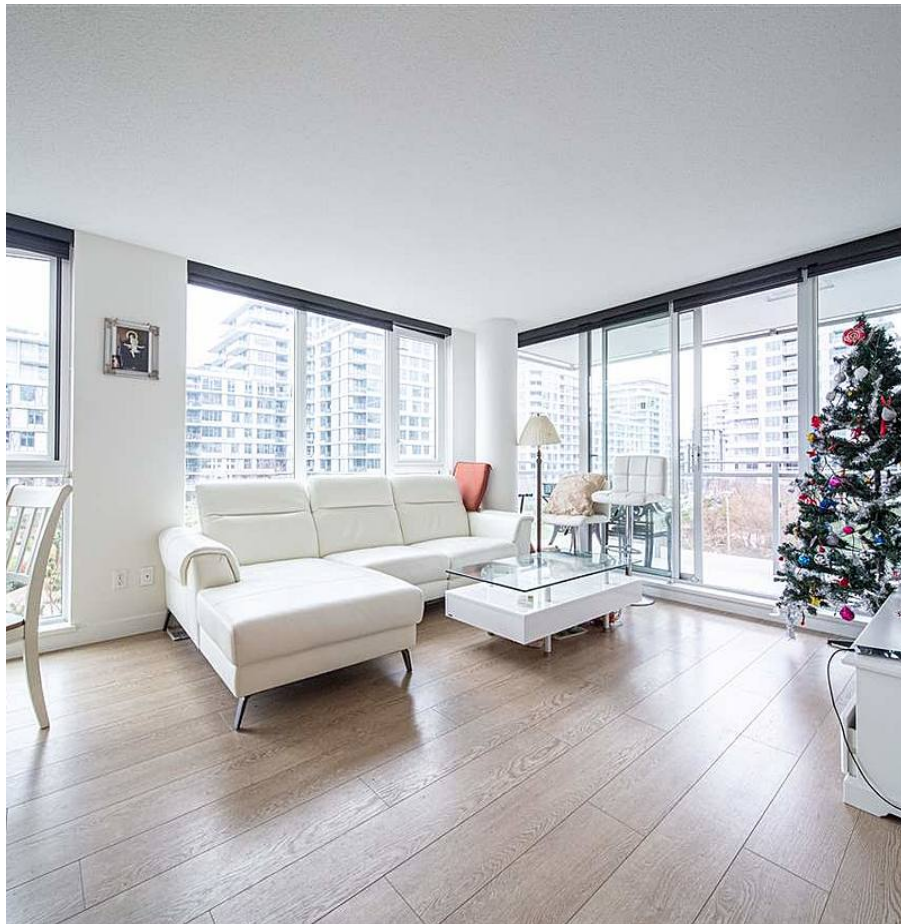


626 8988 Patterson Road, Richmond

\$980,000



Welcome to Concord Gardens by Concord Pacific. This south facing corner unit features 3 spacious bedrooms, 2 full bathrooms. 1073 Sqft of open concept living floor space with air conditioning, luxurious finishes, and natural lights. It has the Diamond Club amenities, including concierge, bowling alley, gym, indoor swimming pool/hot tub/ steam/ sauna, theatre, grand ballroom, library/study, gorgeous courtyard and more. Convenient location to Costco, Foody Mart, Aberdeen Mall, Yaohan Centre, Superstore and nearby parks. Within walking distance to Skytrain station. Don't miss out! Private showing by appointment only. VR Link: <https://my.matterport.com/show/?m=FkM229CRvEq>

KEY INFORMATION

MLS® R2534817

Residential Attached

West Cambie

3 Bedrooms

2 Bathrooms

1,073 SF

\$0.00 Maintenance Fees

FEATURES

Year Built: 2017

Views: GARDEN

Listed By: Nu Stream Realty Inc.

