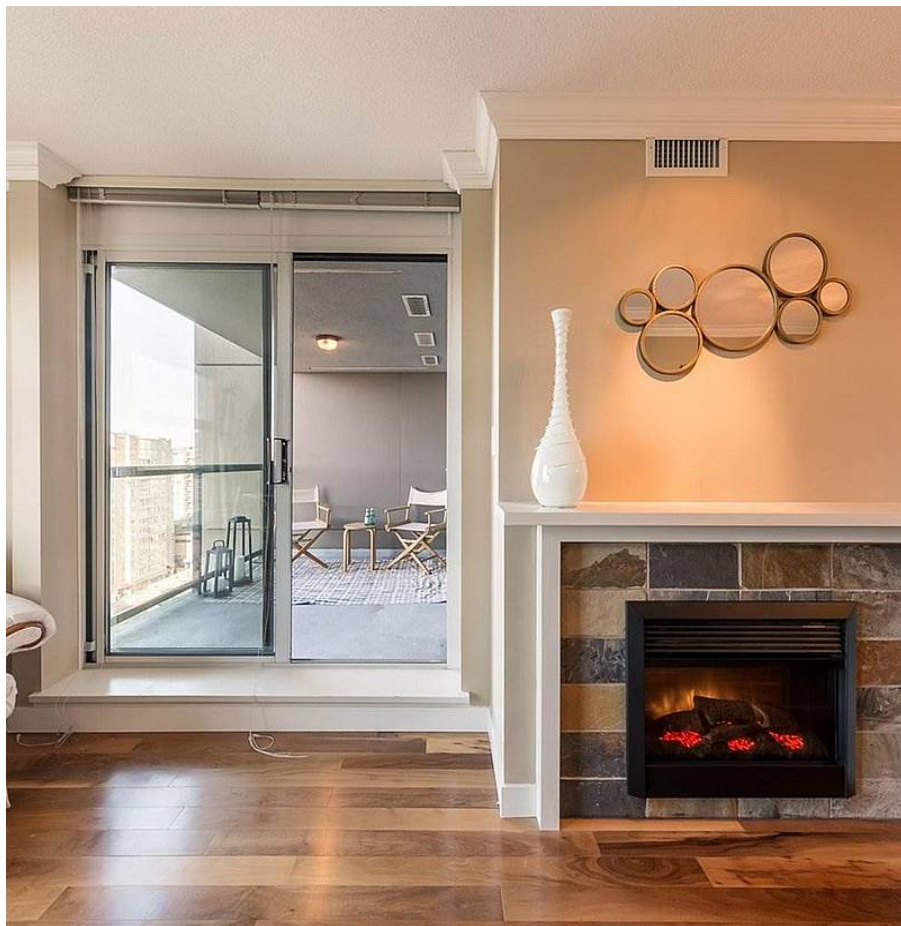


# 1808 6068 No. 3 Road, Richmond

\$599,888



Richmond City Centre air-conditioned sub-penthouse home next to CanadaLine Brighthouse SkyTrain station and Richmond Centre Mall. This rarely available & popular 1 Bed + 1 Bath floorplan is move-in ready. Recent designer upgrades, hardwood floors, gourmet kitchen with gas stove and stainless steel appliances. Enjoy the city and mountain views from the 18th floor, perhaps with a refreshing drink in the large patio of this spacious & bright home. PALOMA is a reputable well-maintained concrete building by multiple shopping centres, restaurants, cafes, parks, medical centres, schools, top Universities, and only 20 min by train from downtown Vancouver. Building amenities include a large party room, roof gardens with a playground, movie theatre, gym & sauna. Lovely home, robust investment.

## KEY INFORMATION

MLS® R2534507

Residential Attached

Brighthouse

1 Bedroom

1 Bathroom

719 SF

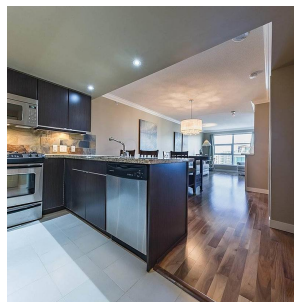
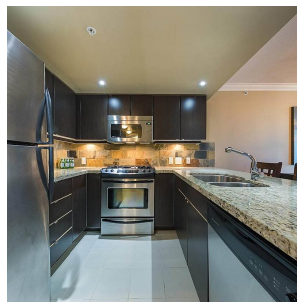
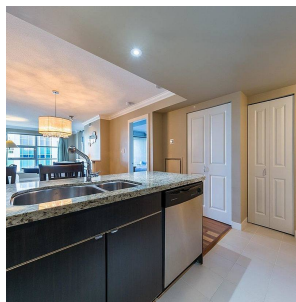
\$256.57 Maintenance Fees

## FEATURES

Year Built: 2007

Views: City & some Water

Listed By: Prompton Real Estate Services Inc.



rennie